

GMR4-WW 12VDC MINI ADJUSTABLE LED DOWNLIGHT



Project Name	Type
Catalog #	Date

PRODUCT OVERVIEW

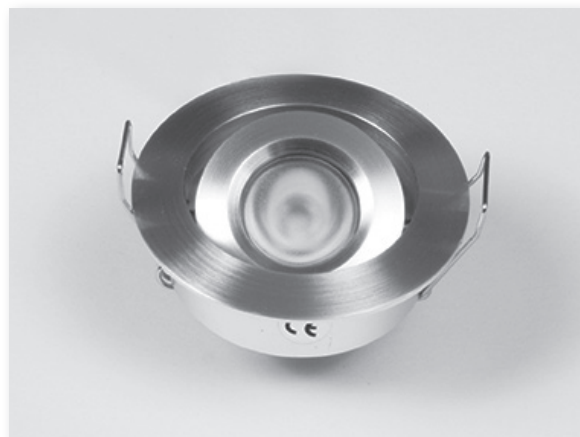
GM Lighting's GMR4-WW mini-downlight is a perfect compact luminaire that is well suited for book shelves, entertainment centers, elevators, and other applications where high performance lighting in a tight space is required. Available in white, black or brushed aluminum and fully dimmable.



FEATURES

- 12VDC operation
- 3000K
- Dimmable
- 2" dia. x 1-1/4" recess depth
- 30° adjustable gimbal
- 80+ CRI
- 120 lumens
- 30° beam spread
- 5 year warranty when used with GM power supplies
- Ambient Operating Temperature: -4F to 113 F

NOTE: Use only magnetic dimmable power supplies. Do not install in an environment that is outside of the products listed ambient temperature.



SPECIFICATIONS

HOUSING CONSTRUCTION

- All metal construction with glass lens. Improved heat sink.
- Recess mount in 1-5/8" drilled hole. Spring clips capture fixture securely.

ELECTRICAL

- LED is 3W.
- Requires external power supply.
- 48" leads.
- Dimmable Power Supplies.

OPTICS

- 120 lumens. 3000K warm white (WW).
- Product can be dimmed utilizing GM Lighting 12VDC Magnetic Power Supply

CERTIFICATION

- ETL listed for interior use only.

WARRANTY

- 5 year warranty

ACCESSORIES

MINI LED ADJUSTABLE RECESSED DOWNLIGHT ACCESSORIES	
GMSB-W	Splice box - white - 2"L x 1"W x 5/8"D
GMSB-B	Splice box - black - 2"L x 1"W x 5/8"D

ORDERING INFORMATION

Example: GMR4-WW-W

Catalog No.	Dimensions	Wattage	Lumens	CRI	Color Temp	Finish
GMR4-WW-W	2" Dia. x 1-1/4" Depth	3W	120	80+	3000K	White
GMR4-WW-B	2" Dia. x 1-1/4" Depth	3W	120	80+	3000K	Black
GMR4-WW-BA	2" Dia. x 1-1/4" Depth	3W	120	80+	3000K	Brushed Aluminum

Includes 48" leads

GMR4-WW 12VDC MINI

ADJUSTABLE LED DOWNLIGHT

GMLighting®

DIMENSION

