

PAIRING YOUR DIMMER TO VOICE CONTROL

GM Lighting's LUXcontrol is your gateway to enabling Smart Home lighting control. Once you have the dimmer recognized by the LUXcontrol app (see set-up instructions at right), follow your Alexa® or GoogleHome™ instructions to introduce LUXcontrol lighting to your Smart Home voice system.

If you still have questions or need extra help, we're here for you! See our website:

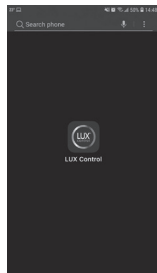
www.gmlighting.net

Amazon, Alexa and all related logos are trademarks of Amazon.com, Inc. or its affiliates. 'iOS' is a registered trademark of Apple.

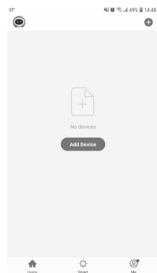
DOWNLOADING, INSTALLING and CONNECTING the LUXcontrol APP to YOUR HANDHELD DEVICE

GM Lighting's LUXcontrol app is a free utility that enables total control over your residential or commercial lighting application, along with other appliances that the app may find.

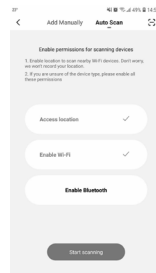
Follow the step by step instructions at right. If you are having difficulty, check your Wi-Fi connection and insure that your SHWD Smart Home Dimmer is installed correctly and is manually able to dim your lighting.



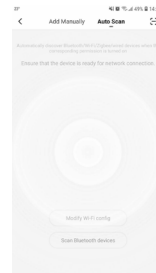
1. Download and install the App LUX Control



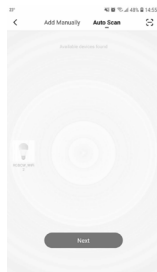
2. Open the App and press "Add Device"



3. Press "Auto Scan" on top to start pairing



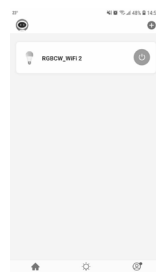
4. During Auto Scan, cycle dimmer On/Off 3 times. Dimmer will be recognized.



5. Found Dimmer! Press "Next".



6. Dimmer added! Press "Done" at upper left.



3. Press the paired Dimmer.

Ready to configure and use!

GM Lighting®



**SHWD Smart Home Dimmer
Installation and Programming
Instructions**

BEFORE YOU START:

Download GM's LUXcontrol™ app from the App Store or Google® Play. Or, scan the QR code for auto download. We will guide you through programming after we help you install your dimmer.



KEY SPECIFICATIONS

Color: White

Electrical Rating: 100-240V AC

Rated Current: 3A

Working Temp: -4°F – 120°F / -20°C – 50°C

Wi-Fi Frequency: 2.4Ghz only

Max. Output: 300W INC – 150W LED

SYSTEM REQUIREMENTS

Existing Wi-Fi 2.4GHz Network

Existing single pole circuit and outlet box with neutral wire

Mobile device running IOS® 10.0 or higher, Android™ 8.0 and above

GM Lighting LUXcontrol™ App (see 'Before You Start')

DIMMER INSTALLATION:

The SHWD is a dimmable LED dimmer that is designed to replace a standard light switch using existing wiring. The SHWD provides a wide dimming range and is suitable for multi-gang installations. All dimmers can be controlled via the LUXcontrol app.

Turn the POWER OFF at the circuit breaker before installing the dimmer. Read and understand these instructions before installing. This device is intended for installation pursuant to National Electric Code and local regulations. We recommend that you use a qualified electrician or electrical contractor to install.

WIRING and PROGRAMMING DIRECTIONS

1. Remove existing wall switch (**FIG. 1**)
2. Mount SHWD dimmer so that RE-SET switch is on bottom (**FIG. 2**)
3. Connect the 120V power wire to the BLACK wire on the SHWD dimmer (**FIG. 3**)
4. Connect the neutral wire WHITE to the WHITE wire on the SHWD dimmer (**FIG. 3**)
5. Connect the brown wire to the load wire (light) (**FIG. 3**)
6. Connect GREEN wire on the SHWD dimmer to ground
7. Push dimmer into place making sure that wires are securely connected and screw to outlet box (**FIG. 4**)
8. Wall plate clips onto SHWD dimmer, locking securely in place (**FIG. 5**). Also can accommodate std. Decora plates.

FIG. 1

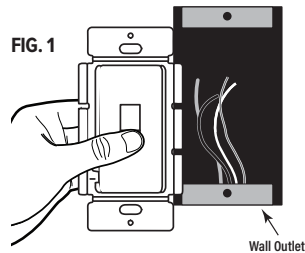


FIG. 2

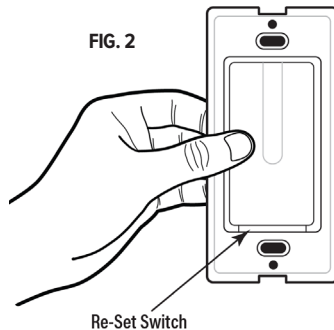


FIG. 3

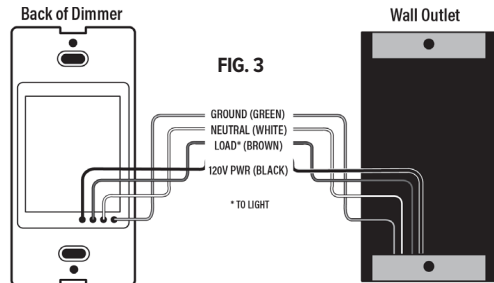


FIG. 4

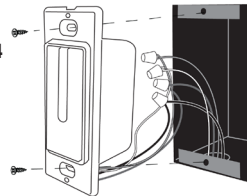


FIG. 5

