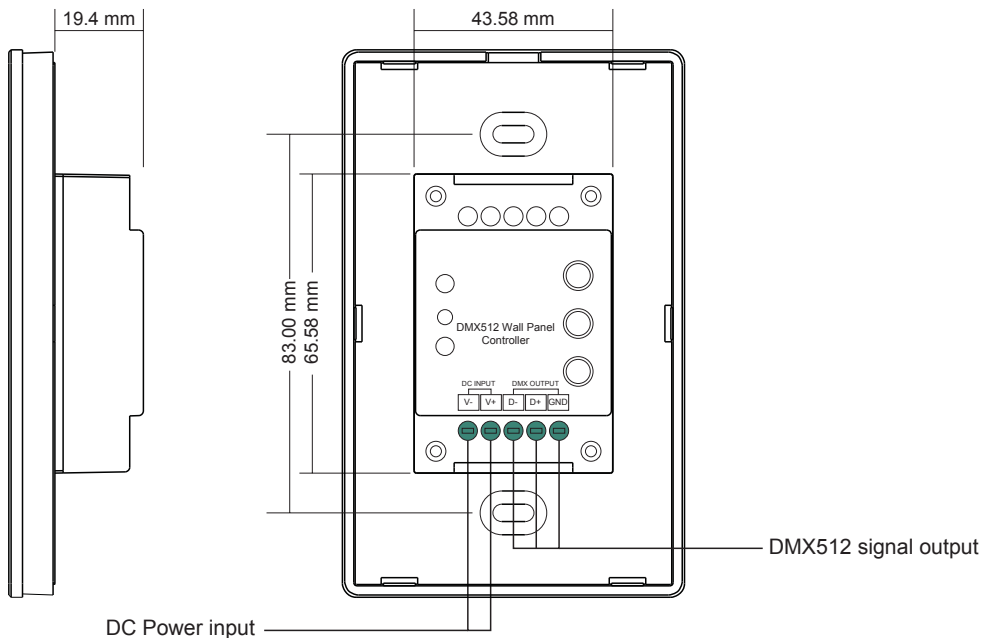


Front side



Back side

PRODUCT DATA

Output Signal	DMX512 signal
Power Supply	12-24VDC
Power consumption	< 20 mA
Operating temperature	0-40°C
Relative humidity	8% to 80%
Dimensions	75x120x29.1mm

- Touch sensitive
- Glass interface(white & black)
- Standard DMX512 Signal output
- Control RGBW color
- Control 3 zones synchronously and separately
- Waterproof grade: IP20

SAFETY & WARNINGS

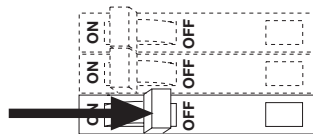
- DO NOT install with power applied to device.
- DO NOT expose the device to moisture.

INSTALLATION

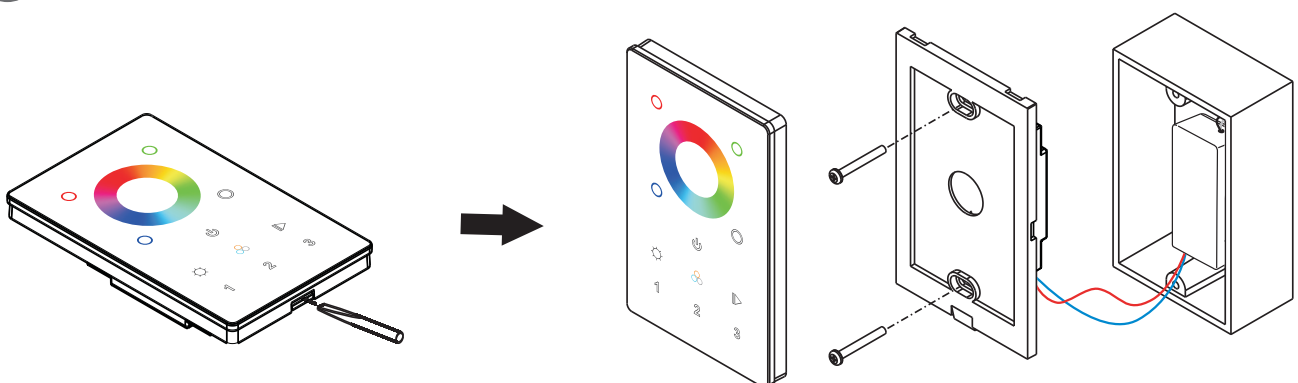
① TURNING OFF POWER



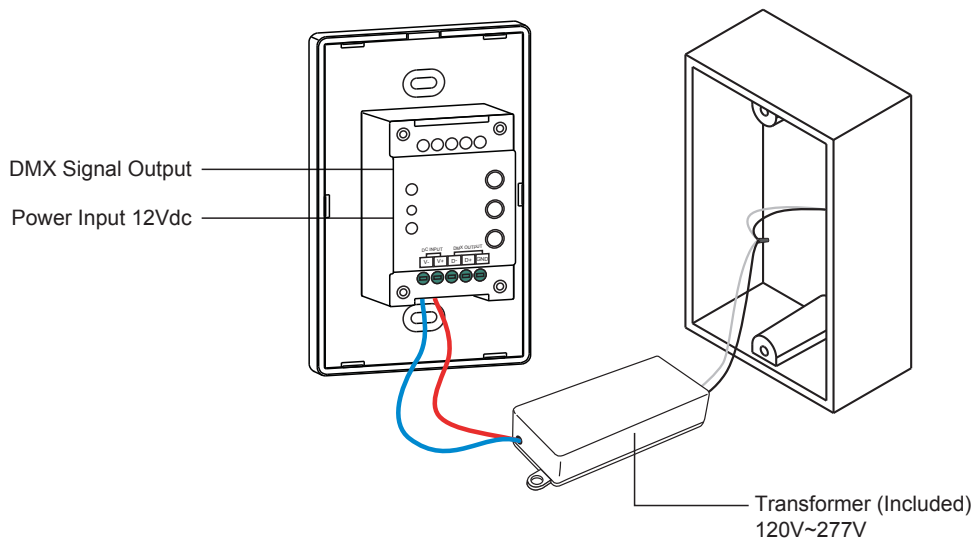
WARNING: Electric Shock Hazard. May result in serious injury or death.
Turn power OFF at circuit breaker prior to installation.



② INSTALL COMPONENTS

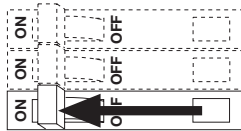


3 CONNECTOR ASSEMBLY



4 TURN POWER ON AT CIRCUIT BREAKER

Install Additional Components, Verify Connections and turn main power ON at breaker.



SYSTEM WORKING IMPROPERLY?

Turn power OFF at circuit breaker and verify all connections.
Review WIRING and TROUBLESHOOTING