

GMLighting®

LUXcontrol™

**Smart Lighting
Control System**

2021 Catalog



BUILDING THE FUTURE OF INNOVATION

Since we opened our doors more than 15 years ago, we have been on the cusp of the technology wave. As an early adopter of LED, we brought this new technology into the home. Through our LED tape light, we leveraged this new energy-saving technology by making it useful to end users both residentially and commercially.

As lighting technology continues to advance, we have embraced it. As manufacturing continues to globalize, affording us the most cost-effective way to bring you products, we have enabled it. As our reputation for superior customer service is proven day after day, we have embodied it.

Being reactive to the market and to those people who have been instrumental to our growth, we are proud to introduce the new LUXcontrol™ Smart Lighting Control System by GM Lighting.

TABLE OF CONTENTS

LUXcontrol™ SMART 12V / 24V CONTROLLERS	6
LUXcontrol™ RECOMMENDED 12V / 24V PRODUCTS	8
LUXcontrol™ SMART Vision120™ CONTROLLER.....	10
LUXcontrol™ SMART WIFI DIMMER	14
LUXcontrol™ SMART WIFI OUTLET	16
LUXcontrol™ SMART WIFI PLUG	17

LUXcontrol™

SMART WiFi LIGHTING CONTROL PRODUCT LINE

LUXcontrol™ by GM Lighting is a smart lighting system that enables you to wirelessly control LED tape lights and other luminaries. The line features a variety of low and high voltage controllers, dimmers, plugs and switches to control your LED lights and smart devices from anywhere in the world with the LUXcontrol™ App.





GMLi



LU
cont



REMOTE CONTROL



SCHEDULE



GROUP CONTROL



TIMER MODE



RGBW SCENES

LUXcontrol™ SMART 12V / 24V WIFI CONTROLLERS

Our line of low voltage controllers provides easy and reliable control of your lights via GM's LUXcontrol™ App. Connect your low voltage luminaires to control dimming, set schedules, turn the lights ON and OFF or preset timers and scenes from the convenience of your smartphone or tablet.



- Input Voltage: 12VDC / 24VDC
- RGBW, CCT and single color control
- Easy installation
- Unlimited grouping
- WiFi Frequency: 2.4GHz required
- WiFi Standard: IEEE 802.11b/g/n
- FCC certification
- Android™ compatible
- iOS® compatible
- Works with Google Assistant™
- Works with Amazon Alexa™
- Recommended for indoor use or requires a NEMA box for outdoor use (by others)

	SHWC (Standard)	SHWC-CCT (Tunable White)	SHWC-RGBW (RGBW)
Input Voltage	12-24VDC	12-24VDC	12-24VDC
Max Load	60W (12V) or 96W (24V)	120W (12V) or 200W (24V)	60W (12V) or 96W (24V)
Output Current	5A	5A (per channel)	5A (per channel)
Operating Temperature	-4 to 122°F	-4 to 122°F	-4 to 122°F
Certifications	FCC, RoHS	FCC, RoHS	FCC, RoHS



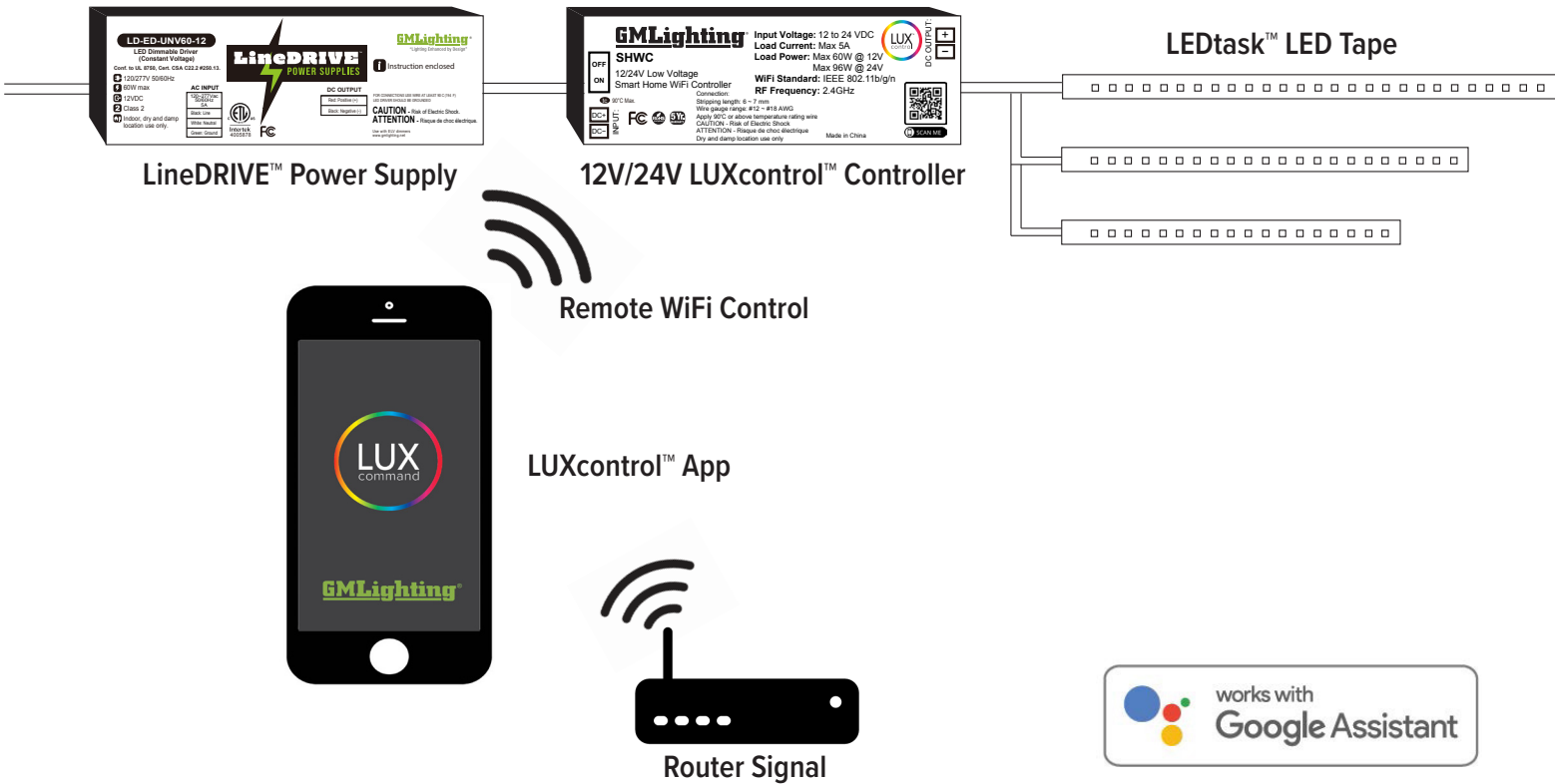
ORDERING INFORMATION

MODEL	DESCRIPTION
SHWC	Smart 2.4GHz WiFi Controller, Standard 12V/24V Low Voltage, 1-Channel / 2-Wire
SHWC-CCT	Smart 2.4GHz WiFi Controller, CCT 12V/24V Low Voltage, 2-Channel / 3-Wire
SHWC-RGBW	Smart 2.4GHz WiFi Controller, RGBW 12V/24V Low Voltage, 4-Channel / 5-Wire

ACCESSORIES

MODEL	DESCRIPTION
SHWC-RGBW-RPT	Universal Smart Power Repeater

EASY INSTALLATION & SEAMLESS CONTROL



Note: For use with LD-E (non-dimmable) or LD-ED (dimmable) power supply only. Not compatible with LD-MD (magnetic) power supply.



LUXcontrol™ RECOMMENDED 12V / 24V PRODUCTS

The LUXcontrol™ 12V and 24V controllers are compatible with any GM's low voltage lighting products. Whether it is a group of lights or single fixture, LUXcontrol has got you covered. Connect your devices and enjoy complete control of your LED tape lights and other lighting fixtures.



RECOMMENDED 12V / 24V PRODUCTS:

- ✓ LEDTask™ LED Tape Series
- ✓ NeoVision24™ LED Neon Tape
- ✓ Lightbars
- ✓ Slim Pucks
- ✓ Pathway Lights
- ✓ Lamina



LUXcontrol™ SMART VISION120™ WIFI CONTROLLER

The SHWC-V120 controller is exclusively designed to control our Vision120™ LED tape via GM's LUXcontrol™ App. Connect your high voltage LED tape to control dimming, set schedules, turn the lights ON and OFF or preset timers and scenes from the convenience of your smartphone or tablet.

- Input Voltage: 120V
- Single color control
- Easy installation
- Unlimited grouping
- WiFi Frequency: 2.4GHz required
- WiFi Standard: IEEE 802.11b/g/n
- FCC, UL
- IP65
- Android™ compatible
- iOS® compatible
- Works with Google Assistant™
- Works with Amazon Alexa™
- Recommended for indoor / outdoor use



	SHWC-V120 (Standard)
Input Voltage	120VAC
Max Load	600W
Output Current	5A
Operating Temperature	-4°F to 122°F
Certifications	FCC, IP65, UL, RoHS

RECOMMENDED PRODUCTS:

- ✓ Vision120™ SO (Standard Output)
- ✓ Vision120™ HO (High Output)
- ✓ Vision120™ SHO (Super High Output)



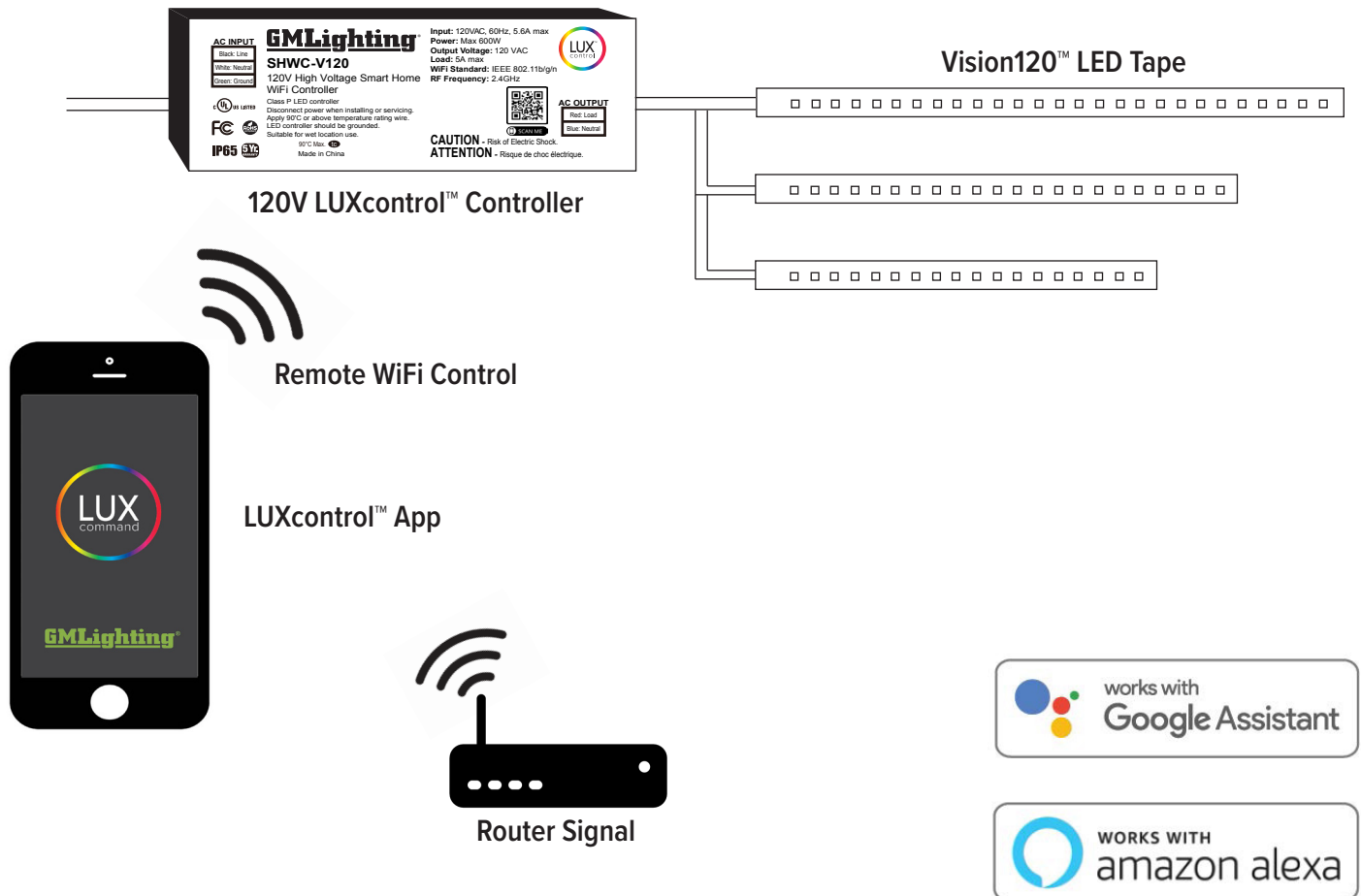
ORDERING INFORMATION

MODEL	DESCRIPTION
SHWC-V120	Smart 2.4GHz WiFi Controller, 120V High Voltage, IP65, 1-Channel / 2-Wire for Vision120™ SO, HO and SHO

ACCESSORIES

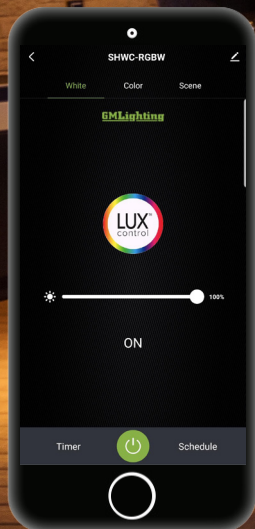
MODEL	DESCRIPTION
GM-WPSC	Universal Wet Location 3-wire splice connector

EASY INSTALLATION & SEAMLESS CONTROL





WATCH VIDEO



DOWNLOAD OUR LUXcontrol™ APP AND GAIN FULL CONTROL OF YOUR LIGHTING

ON / OFF control
Dimming
Timer
Color Control
Schedule
Grouping
Custom Scenes
Voice Control
and more!



LUXcontrol™ SMART WIFI DIMMER

Smart dimmer WiFi switch by GM Lighting provides ultimate lighting control from anywhere with GM's LUXcontrol™ App. Smart dimmer enables wireless control of your lighting fixtures providing functions such as step dimming, ON/OFF control, timer and schedule.

- Input Voltage: 100-240VAC, 50/60Hz
- Load power: 120VAC / 300W(INC) / 150W(LED)
- Relay supply voltage: 5VDC
- Module supply voltage: 3.3VDC
- Working Temperature: -4°F to 120°F
- Start up time: <1S
- Single-Pole
- No hub required
- UL60730 certified
- FCC Part15
- Android™ compatible
- iOS® compatible
- Works with Google Assistant™
- Works with Amazon Alexa™

ORDERING INFORMATION

MODEL	DESCRIPTION
SHWD	Smart 2.4GHz WiFi Dimmer, 120V, White



RECOMMENDED 120V PRODUCTS:

- ✓ Undercabinet
- ✓ RSD Downlights
- ✓ MicroTask (MDL) Downlights
- ✓ GMR6 Downlights
- ✓ GeoTask
- ✓ S4/S6/S9 Downlights
- ✓ Covalinear





LUXcontrol™ SMART WIFI OUTLET

Smart WiFi outlet by GM Lighting can be controlled from anywhere with GM's LUXcontrol™ App. This smart receptacle provides you with wireless control of your devices allowing simple and personalized control of your items with schedule, preset timer and ON/OFF function.

- Input Voltage: 100-130VAC, 60Hz
- USB Load: 120VAC / Single UBS output 5V/2.1A
- Outlet load : Single outlet load 10A, total load 15A
- Relay supply voltage: 5VDC
- Module supply voltage: 3.3VDC
- Standby power: <0.5
- Working Temperature: -4°F to 120°F
- No hub required
- UL60950, UL498, FCC Part15
- Android™ compatible
- iOS® compatible
- Works with Google Assistant™
- Works with Amazon Alexa™



ORDERING INFORMATION

MODEL	DESCRIPTION
SHWO	Smart 2.4GHz WiFi Outlet, 120V, White



LUXcontrol™ SMART WIFI PLUG

Smart WiFi electrical plug by GM Lighting provides energy saving performance and wireless control with GM's LUXcontrol™ App. Create customized schedules, set timers and turn your devices ON/OFF from the comfort of your mobile phone or tablet.

- Input Voltage: 120VAC, 60Hz
- Max load: 10A
- Relay supply voltage: 5VDC
- Module supply voltage: 3.3VDC
- Standby Power: <0.7
- Indicator light: Blue
- Working Temperature: -4°F to 120°F
- No hub required
- UL60950, UL498
- FCC Part15
- Android™ compatible
- iOS® compatible
- Works with Google Assistant™
- Works with Amazon Alexa™



ORDERING INFORMATION

MODEL	DESCRIPTION
SHWP	Smart 2.4GHz WiFi Plug 120V, White





CHOOSE YOUR LUXcontrol™ LIGHT and ACCESSORY

LUXcontrol™ is compatible with all GM Lighting's LED tape and lighting products. Control your lights from anywhere in the world with the LUXcontrol™ App and create your own intelligent scenarios. Contact us to find out which control option is right for you.

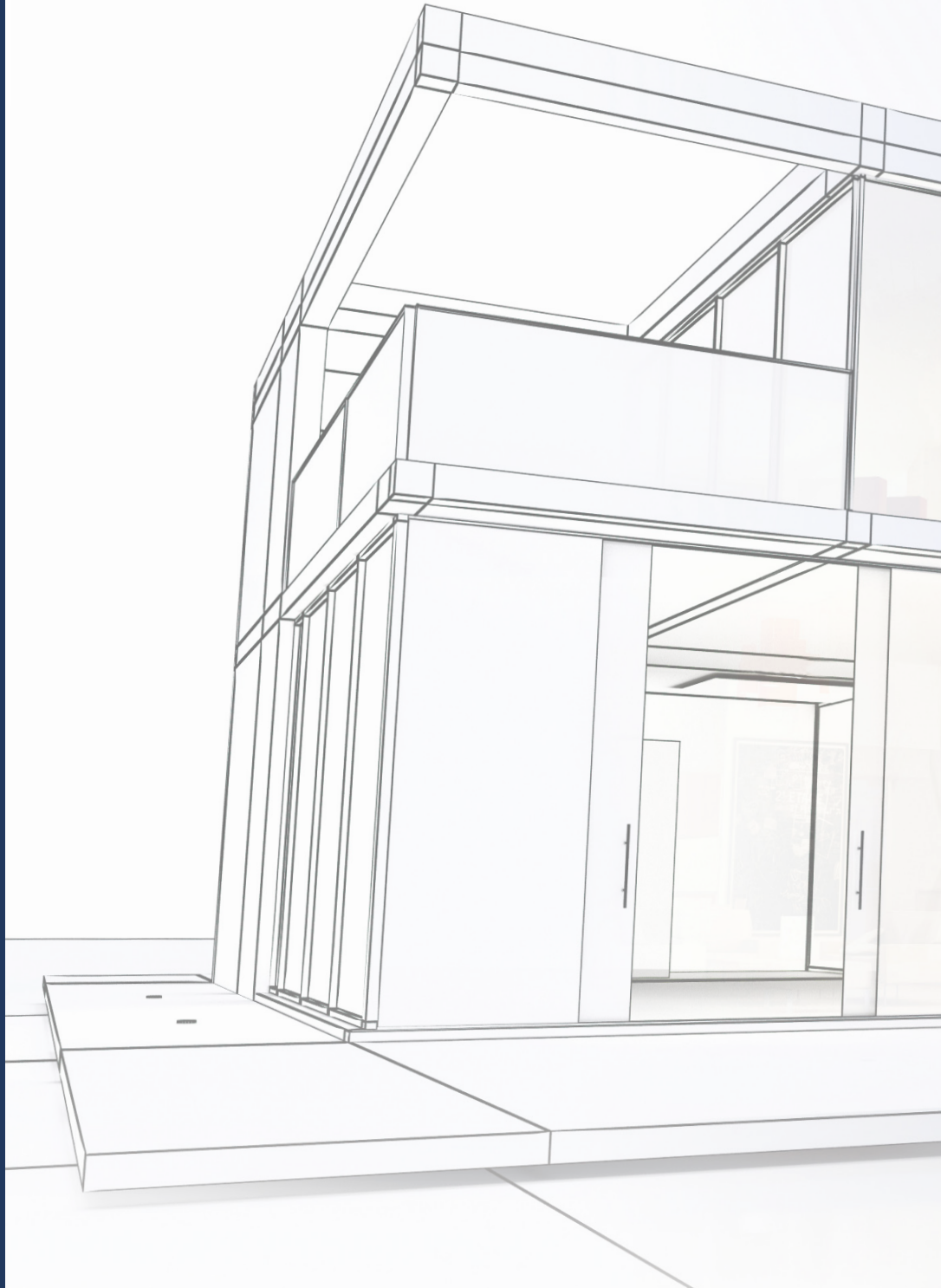


ELECTRONIC
ELECTRONIC DIMMABLE
MAGNETIC DIMMABLE



GMLighting®

YOUR SPACE JUST GOT SMARTER



18700 Ridgeland Ave., Tinley Park, IL 60477
Toll-Free: (866) 671-0811 • FAX: (708) 478-2640
www.gmlighting.net
sales@gmlighting.net
tech@gmlighting.net
marketing@gmlighting.net

Printed in the U.S.A.
March 2021
©2021 GM Lighting
Specifications subject to change without notice.