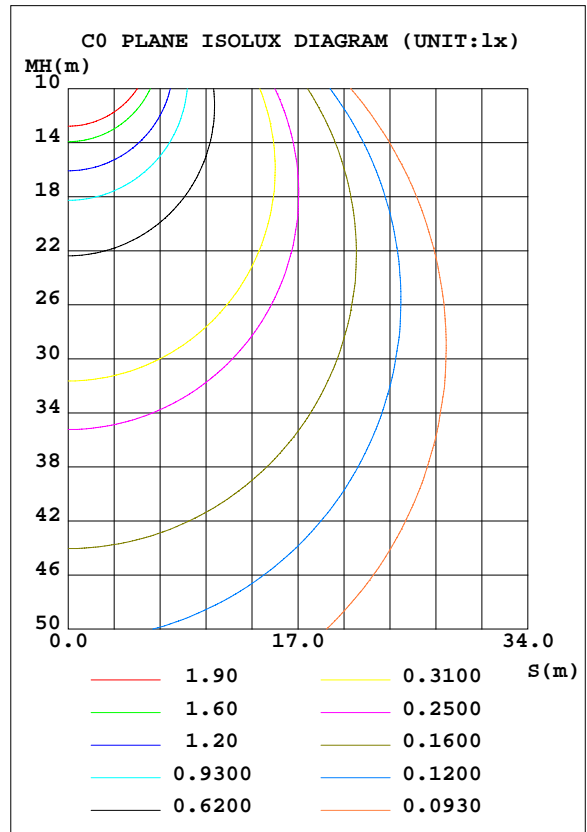
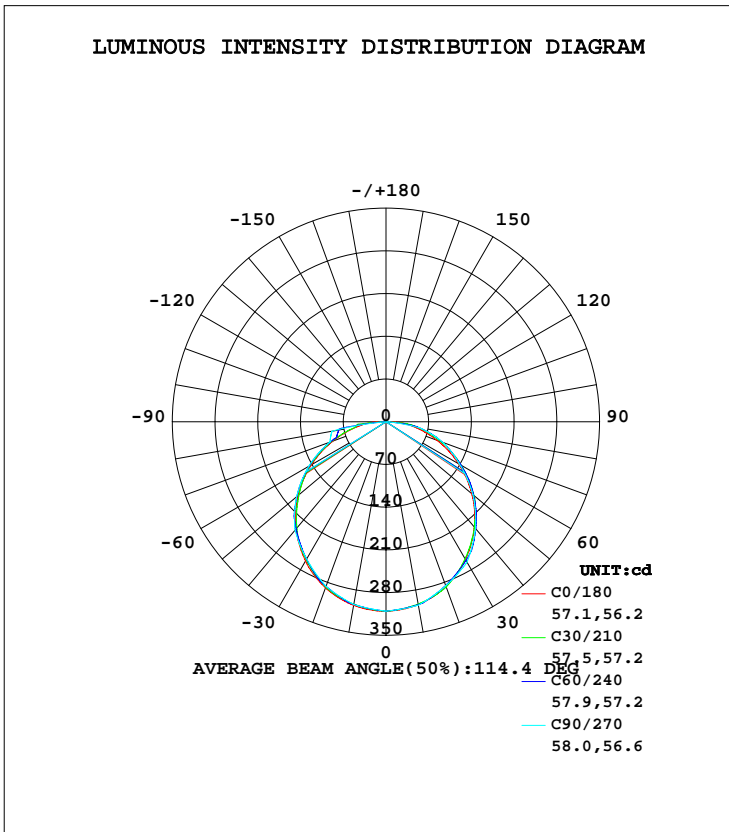


LUMINAIRE PHOTOMETRIC TEST REPORT

Test:U:120.1V I:0.1381A P:14.90W PF:0.8988 Lamp Flux:1046.49x1 lm		
NAME: PRX	TYPE:	WEIGHT:
SPEC.:	DIM.:	SERIAL No.:
MFR.:	SUR.:	PROTECTION ANGLE:

DATA OF LAMP		PHOTOMETRIC DATA Eff: 61.94 lm/W			
MODEL	PRX	I _{max} (cd)	310.3	S/MH(C0/180)	1.26
NOMINAL POWER(W)	15	LOR(%)	88.2	S/MH(C90/270)	1.25
RATED VOLTAGE(V)	120	TOTAL FLUX(lm)	923.09	η UP, DN(C0-180)	0.0,43.6
NOMINAL FLUX(lm)	1046.49	CIE CLASS	DIRECT	η UP, DN(C180-360)	0.0,44.6
LAMPS INSIDE	1	η up(%)	0.0	CIBSE SHR NOM	1.25
TEST VOLTAGE(V)	120	η down(%)	88.2	CIBSE SHR MAX	1.35



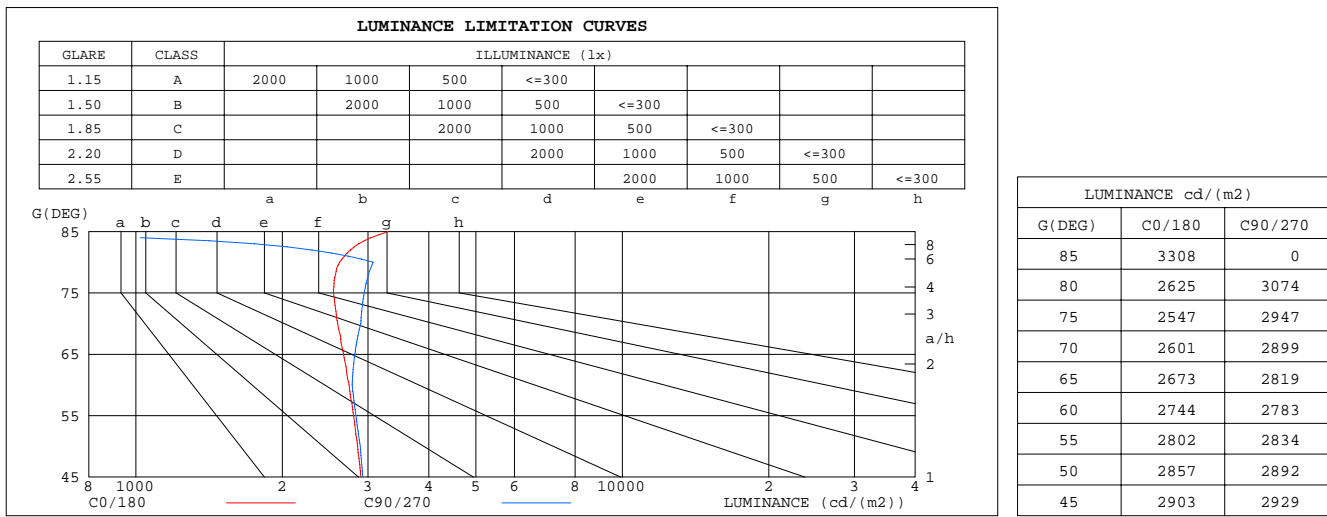
C Range: 0 - 360DEG
 C Interval: 5.0DEG
 Test Speed: HIGH
 Temperature:25.3DEG
 Operators:LIU
 Test Date:2019-05-16

γ Range: 0 - 90DEG
 γ Interval: 0.5DEG
 Test System:EVERFINE GO-2000B_V1 SYSTEM V2.0.291
 Humidity:65.0%
 Test Distance:8.460m [K=1.0000]
 Remarks:

ZONAL FLUX DIAGRAM
AND LUMINANCE LIMITATION CURVES

ZONAL FLUX DIAGRAM:

γ	C0	C45	C90	C135	C180	C225	C270	C315	γ	Φ zone	Φ total	lum, lamp
5	308.7	307.6	307.8	308.0	309.2	307.7	307.3	307.3	0- 5	7.383	7.383	0.80,0.71
10	304.3	303.6	305.3	304.1	305.4	303.6	304.2	302.9	5- 10	21.88	29.26	3.17,2.8
15	297.1	297.5	295.7	297.9	298.8	297.5	295.8	296.5	10- 15	35.63	64.90	7.03,6.2
20	287.2	286.1	286.1	286.7	289.7	287.2	287.3	285.8	15- 20	48.07	113.0	12.2,10.8
25	275.1	273.5	275.9	274.6	277.8	275.8	273.6	273.8	20- 25	58.92	171.9	18.6,16.4
30	260.5	260.0	265.7	261.0	263.6	261.7	259.9	259.2	25- 30	67.83	239.7	26,22.9
35	243.7	245.7	247.0	246.1	247.3	244.3	245.9	242.4	30- 35	74.57	314.3	34,30
40	225.2	230.2	228.3	229.8	229.2	226.8	232.0	225.3	35- 40	78.89	393.2	42.6,37.6
45	205.3	209.2	207.1	207.5	209.5	209.1	211.6	206.9	40- 45	80.70	473.9	51.3,45.3
50	183.6	188.4	185.9	184.9	187.9	191.2	191.3	188.7	45- 50	79.81	553.7	60,52.9
55	160.7	165.8	162.5	159.9	165.1	167.8	168.8	165.9	50- 55	76.39	630.1	68.3,60.2
60	137.2	143.5	139.1	135.2	141.2	144.5	146.2	143.5	55- 60	70.57	700.6	75.9,67
65	113.0	119.1	119.1	110.3	116.9	120.5	122.0	119.3	60- 65	62.81	763.5	82.7,73
70	88.95	96.56	99.15	88.27	92.38	96.49	97.79	95.86	65- 70	53.63	817.1	88.5,78.1
75	65.93	75.67	76.27	69.69	69.02	72.56	93.87	72.64	70- 75	44.07	861.2	93.3,82.3
80	45.57	54.27	53.38	49.94	48.13	65.95	89.95	65.85	75- 80	35.63	896.8	97.1,85.7
85	28.83	17.20	0	15.82	30.96	26.01	0	25.90	80- 85	22.57	919.4	99.6,87.9
90	8.353	0	0	0	10.29	0	0	0	85- 90	3.736	923.1	100,88.2
95									90- 95			
100									95-100			
105									100-105			
110									105-110			
115									110-115			
120									115-120			
125									120-125			
130									125-130			
135									130-135			
140									135-140			
145									140-145			
150									145-150			
155									150-155			
160									155-160			
165									160-165			
170									165-170			
175									170-175			
180									175-180			
DEG	LUMINOUS INTENSITY:cd									UNIT:lm		



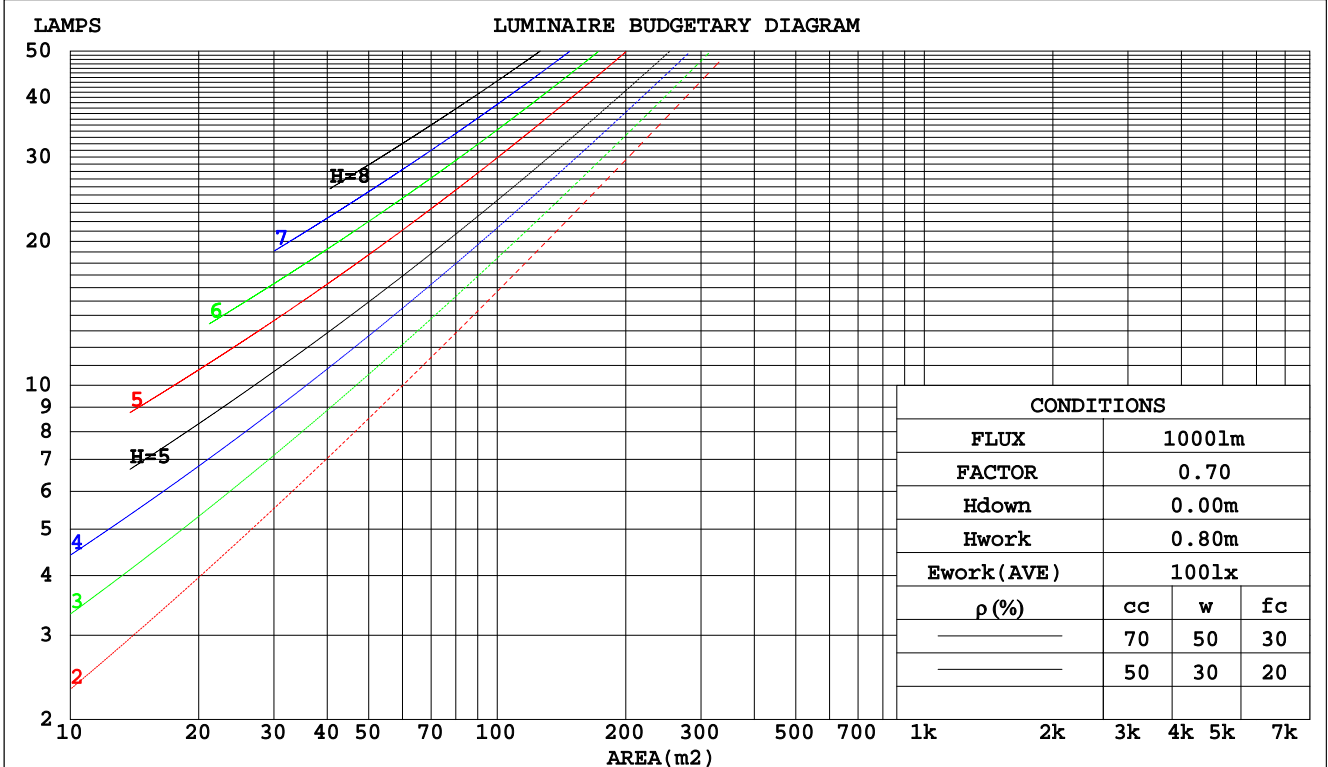
C Range: 0 - 360DEG
 C Interval: 5.0DEG
 Test Speed: HIGH
 Temperature: 25.3DEG
 Operators: LIU
 Test Date: 2019-05-16

γ Range: 0 - 90DEG
 γ Interval: 0.5DEG
 Test System: EVERFINE GO-2000B_V1 SYSTEM V2.0.291
 Humidity: 65.0%
 Test Distance: 8.460m [K=1.0000]
 Remarks:

CU AND LUMINAIRE BUDGETARY ESTIMATE DIAGRAM

Test:U:120.1V I:0.1381A P:14.90W PF:0.8988 Lamp Flux:1046.49x1 lm		
NAME: PRX	TYPE:	WEIGHT:
SPEC.:	DIM.:	SERIAL No.:
MFR.:	SUR.:	PROTECTION ANGLE:

pcc	80%			70%			50%			30%			10%			0
	50%	30%	10%	50%	30%	10%	50%	30%	10%	50%	30%	10%	50%	30%	10%	0
pw																
pfc	20%			20%			20%			20%			20%			0
RCR	RCR:Room Cavity Ratio						Coefficients of Utilization(CU)									
0.0	1.05	1.05	1.05	1.03	1.03	1.03	.98	.98	.98	.94	.94	.94	.90	.90	.90	.88
1.0	.91	.87	.83	.89	.85	.82	.85	.82	.79	.81	.79	.77	.78	.76	.74	.72
2.0	.79	.72	.67	.77	.71	.66	.74	.69	.65	.71	.67	.63	.68	.65	.62	.60
3.0	.69	.61	.55	.67	.60	.55	.65	.59	.54	.62	.57	.53	.60	.56	.52	.50
4.0	.61	.53	.47	.60	.52	.46	.57	.51	.46	.55	.50	.45	.53	.48	.44	.42
5.0	.54	.46	.40	.53	.46	.40	.51	.45	.39	.50	.44	.39	.48	.43	.38	.37
6.0	.49	.41	.35	.48	.40	.35	.46	.39	.34	.45	.39	.34	.43	.38	.34	.32
7.0	.44	.36	.31	.43	.36	.31	.42	.35	.30	.41	.35	.30	.40	.34	.30	.28
8.0	.40	.33	.27	.40	.32	.27	.38	.32	.27	.37	.31	.27	.36	.31	.27	.25
9.0	.37	.30	.25	.36	.29	.25	.35	.29	.24	.34	.28	.24	.33	.28	.24	.22
10.0	.34	.27	.22	.34	.27	.22	.33	.26	.22	.32	.26	.22	.31	.26	.22	.20



C Range: 0 - 360DEG
 C Interval: 5.0DEG
 Test Speed: HIGH
 Temperature: 25.3DEG
 Operators: LIU
 Test Date: 2019-05-16

γ Range: 0 - 90DEG
 γ Interval: 0.5DEG
 Test System: EVERFINE GO-2000B_V1 SYSTEM V2.0.291
 Humidity: 65.0%
 Test Distance: 8.460m [K=1.0000]
 Remarks:

WEC AND CCEC

Test:U:120.1V I:0.1381A P:14.90W PF:0.8988 Lamp Flux:1046.49x1 lm		
NAME: PRX	TYPE:	WEIGHT:
SPEC.:	DIM.:	SERIAL No.:
MFR.:	SUR.:	PROTECTION ANGLE:

ρcc	80%			70%			50%			30%			10%			0
ρw	50%	30%	10%	50%	30%	10%	50%	30%	10%	50%	30%	10%	50%	30%	10%	0
ρfc	20%			20%			20%			20%			20%			0
RCR	RCR:Room Cavity Ratio						Wall Exitance Coefficients(WEC)									
0.0																
1.0	.290	.165	.052	.284	.162	.051	.272	.156	.050	.261	.151	.048	.251	.146	.047	
2.0	.269	.147	.045	.263	.145	.045	.253	.140	.044	.243	.136	.043	.234	.132	.042	
3.0	.246	.131	.039	.241	.129	.039	.232	.126	.038	.223	.122	.038	.216	.119	.037	
4.0	.226	.117	.034	.221	.116	.034	.213	.113	.034	.206	.110	.033	.199	.108	.033	
5.0	.208	.106	.031	.204	.105	.030	.197	.102	.030	.190	.100	.030	.183	.098	.029	
6.0	.192	.096	.028	.189	.095	.027	.182	.093	.027	.176	.091	.027	.170	.090	.027	
7.0	.178	.088	.025	.175	.087	.025	.169	.086	.025	.164	.084	.024	.159	.083	.024	
8.0	.166	.081	.023	.163	.080	.023	.158	.079	.023	.153	.078	.022	.149	.076	.022	
9.0	.155	.075	.021	.153	.075	.021	.148	.073	.021	.144	.072	.021	.140	.071	.021	
10.0	.146	.070	.019	.144	.069	.019	.140	.068	.019	.136	.067	.019	.132	.066	.019	

ρcc	80%			70%			50%			30%			10%			0
ρw	50%	30%	10%	50%	30%	10%	50%	30%	10%	50%	30%	10%	50%	30%	10%	0
ρfc	20%			20%			20%			20%			20%			0
RCR	RCR:Room Cavity Ratio						Ceiling Cavity Exitance Coefficients(CCEC)									
0.0	.168	.168	.168	.144	.144	.144	.098	.098	.098	.056	.056	.056	.018	.018	.018	
1.0	.160	.138	.117	.137	.118	.101	.094	.081	.070	.054	.047	.041	.017	.015	.013	
2.0	.153	.116	.085	.131	.100	.074	.090	.069	.051	.052	.040	.030	.017	.013	.010	
3.0	.147	.101	.064	.126	.087	.056	.086	.060	.039	.050	.035	.023	.016	.011	.008	
4.0	.140	.089	.051	.120	.077	.044	.083	.054	.031	.048	.031	.018	.015	.010	.006	
5.0	.133	.080	.041	.114	.069	.036	.079	.048	.025	.046	.028	.015	.015	.009	.005	
6.0	.127	.073	.034	.109	.063	.030	.075	.044	.021	.044	.026	.012	.014	.008	.004	
7.0	.121	.067	.029	.104	.058	.025	.072	.041	.018	.042	.024	.011	.013	.008	.004	
8.0	.115	.062	.025	.099	.053	.022	.068	.037	.015	.040	.022	.009	.013	.007	.003	
9.0	.109	.057	.022	.094	.050	.019	.065	.035	.014	.038	.021	.008	.012	.007	.003	
10.0	.104	.053	.020	.090	.046	.017	.062	.033	.012	.036	.019	.007	.012	.006	.002	

C Range: 0 - 360DEG
 C Interval: 5.0DEG
 Test Speed: HIGH
 Temperature:25.3DEG
 Operators:LIU
 Test Date:2019-05-16

γ Range: 0 - 90DEG
 γ Interval: 0.5DEG
 Test System:EVERFINE GO-2000B_V1 SYSTEM V2.0.291
 Humidity:65.0%
 Test Distance:8.460m [K=1.0000]
 Remarks:

UGR(Unified Glare Rating) Table

Test:U:120.1V I:0.1381A P:14.90W PF:0.8988 Lamp Flux:1046.49x1 lm										
NAME: PRX					TYPE:			WEIGHT:		
SPEC.:					DIM.:			SERIAL No.:		
MFR.:					SUR.:			PROTECTION ANGLE:		
ceiling/cavity	0.7	0.7	0.5	0.5	0.3	0.7	0.7	0.5	0.5	0.3
walls	0.5	0.3	0.5	0.3	0.3	0.5	0.3	0.5	0.3	0.3
working plane	0.2	0.2	0.2	0.2	0.2	0.2	0.2	0.2	0.2	0.2
Room dimensions	Viewed crosswise					Viewed endwise				
x = 2H y = 2H	16.4	18.0	16.7	18.2	18.4	16.5	18.1	16.8	18.3	18.5
3H	18.1	19.5	18.4	19.7	20.0	18.3	19.8	18.6	20.0	20.2
4H	18.8	20.2	19.1	20.4	20.7	19.2	20.5	19.5	20.8	21.0
6H	19.4	20.7	19.8	21.0	21.3	19.9	21.2	20.2	21.5	21.7
8H	19.7	21.0	20.0	21.2	21.5	20.0	21.3	20.4	21.6	21.9
12H	20.0	21.2	20.3	21.5	21.8	20.0	21.2	20.4	21.5	21.8
4H 2H	17.1	18.5	17.4	18.8	19.0	17.2	18.6	17.5	18.8	19.1
3H	19.0	20.2	19.3	20.5	20.8	19.2	20.4	19.6	20.7	21.0
4H	19.9	21.0	20.3	21.3	21.6	20.2	21.3	20.6	21.6	22.0
6H	20.7	21.7	21.1	22.0	22.4	21.1	22.1	21.5	22.4	22.8
8H	21.1	22.0	21.5	22.4	22.7	21.3	22.2	21.7	22.6	23.0
12H	21.5	22.3	21.9	22.7	23.1	21.3	22.2	21.7	22.5	23.0
8H 4H	20.3	21.2	20.7	21.6	22.0	20.6	21.5	21.0	21.9	22.3
6H	21.3	22.1	21.8	22.5	22.9	21.7	22.5	22.1	22.9	23.3
8H	21.9	22.6	22.3	23.0	23.4	22.0	22.7	22.4	23.1	23.5
12H	22.4	23.0	22.9	23.5	23.9	22.0	22.6	22.5	23.0	23.5
12H 4H	20.4	21.2	20.8	21.6	22.0	20.6	21.5	21.0	21.9	22.3
6H	21.5	22.2	21.9	22.6	23.1	21.8	22.5	22.3	22.9	23.4
8H	22.1	22.7	22.6	23.1	23.6	22.2	22.7	22.6	23.2	23.7
Variations with the observer position at spacings:										
S = 1.0H	+ 0.1 / - 0.2					+ 0.1 / - 0.1				
1.5H	+ 0.2 / - 0.3					+ 0.2 / - 0.3				
2.0H	+ 0.2 / - 0.4					+ 0.2 / - 0.3				

CIE Pub.117 Corrected 1046 lm Total Lamp Luminous Flux.(8log(F/F0) = 0.2)

C Range: 0 - 360DEG
 C Interval: 5.0DEG
 Test Speed: HIGH
 Temperature:25.3DEG
 Operators:LIU
 Test Date:2019-05-16

γ Range: 0 - 90DEG
 γ Interval: 0.5DEG
 Test System:EVERFINE GO-2000B_V1 SYSTEM V2.0.291
 Humidity:65.0%
 Test Distance:8.460m [K=1.0000]
 Remarks:

UTILIZATION FACTORS TABLE

Test:U:120.1V I:0.1381A P:14.90W PF:0.8988 Lamp Flux:1046.49x1 lm		
NAME: PRX	TYPE:	WEIGHT:
SPEC.:	DIM.:	SERIAL No.:
MFR.:	SUR.:	PROTECTION ANGLE:

REFLECTANCE										
Ceiling	0.8	0.8	0.8	0.7	0.7	0.7	0.5	0.5	0.5	0
Walls	0.7	0.5	0.3	0.7	0.5	0.3	0.7	0.5	0.3	0
Working plane	0.2	0.2	0.2	0.2	0.2	0.2	0.2	0.2	0.2	0
ROOM INDEX	UTILIZATION FACTORS(PERCENT) $k(RI) \times RCR = 5$									
k = 0.60	50	39	33	49	39	33	48	39	33	27
0.80	59	48	41	58	48	41	56	47	41	35
1.00	66	56	49	65	55	49	63	57	48	42
1.25	72	63	56	71	62	56	68	61	55	48
1.50	77	67	61	75	67	61	72	65	60	53
2.00	83	75	69	81	74	68	78	72	67	60
2.50	86	79	73	84	78	73	81	75	71	63
3.00	89	83	78	87	82	77	84	79	75	67
4.00	93	88	83	91	86	82	87	83	80	72
5.00	95	91	87	93	89	85	89	86	83	75
ROOM INDEX	UF(total)									Direct
According to DIN EN 13032-2 2004			Suspended				SHRNOM = 1.25			

C Range: 0 - 360DEG
 C Interval: 5.0DEG
 Test Speed: HIGH
 Temperature:25.3DEG
 Operators:LIU
 Test Date:2019-05-16

γ Range: 0 - 90DEG
 γ Interval: 0.5DEG
 Test System:EVERFINE GO-2000B_V1 SYSTEM V2.0.291
 Humidity:65.0%
 Test Distance:8.460m [K=1.0000]
 Remarks:

ISOCANDELA DIAGRAM

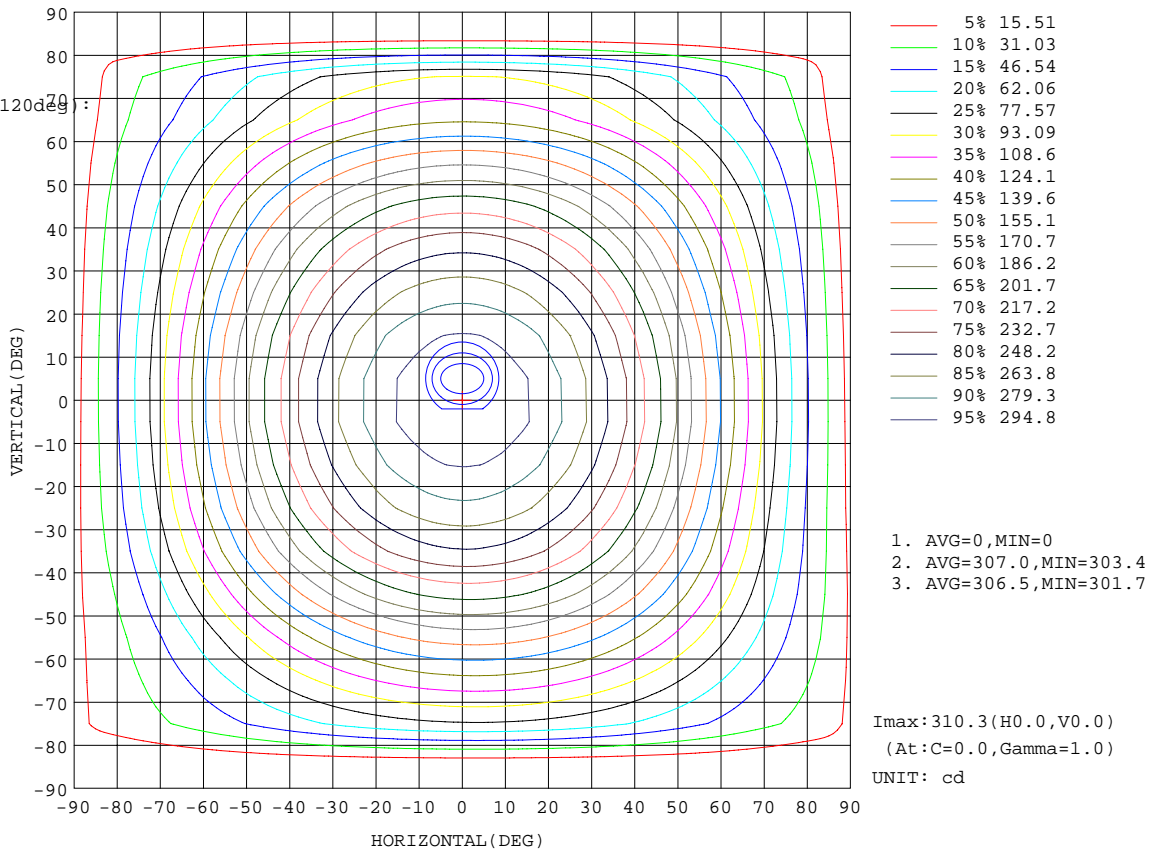
Test:U:120.1V I:0.1381A P:14.90W PF:0.8988 Lamp Flux:1046.49x1 lm		
NAME: PRX	TYPE:	WEIGHT:
SPEC.:	DIM.:	SERIAL No.:
MFR.:	SUR.:	PROTECTION ANGLE:

Conical surface Flux(90deg):

473.88 lm
%lum = 51.3%
%lamp = 45.3%

Conical surface Flux(120deg):

700.64 lm
%lum = 75.9%
%lamp = 67.0%

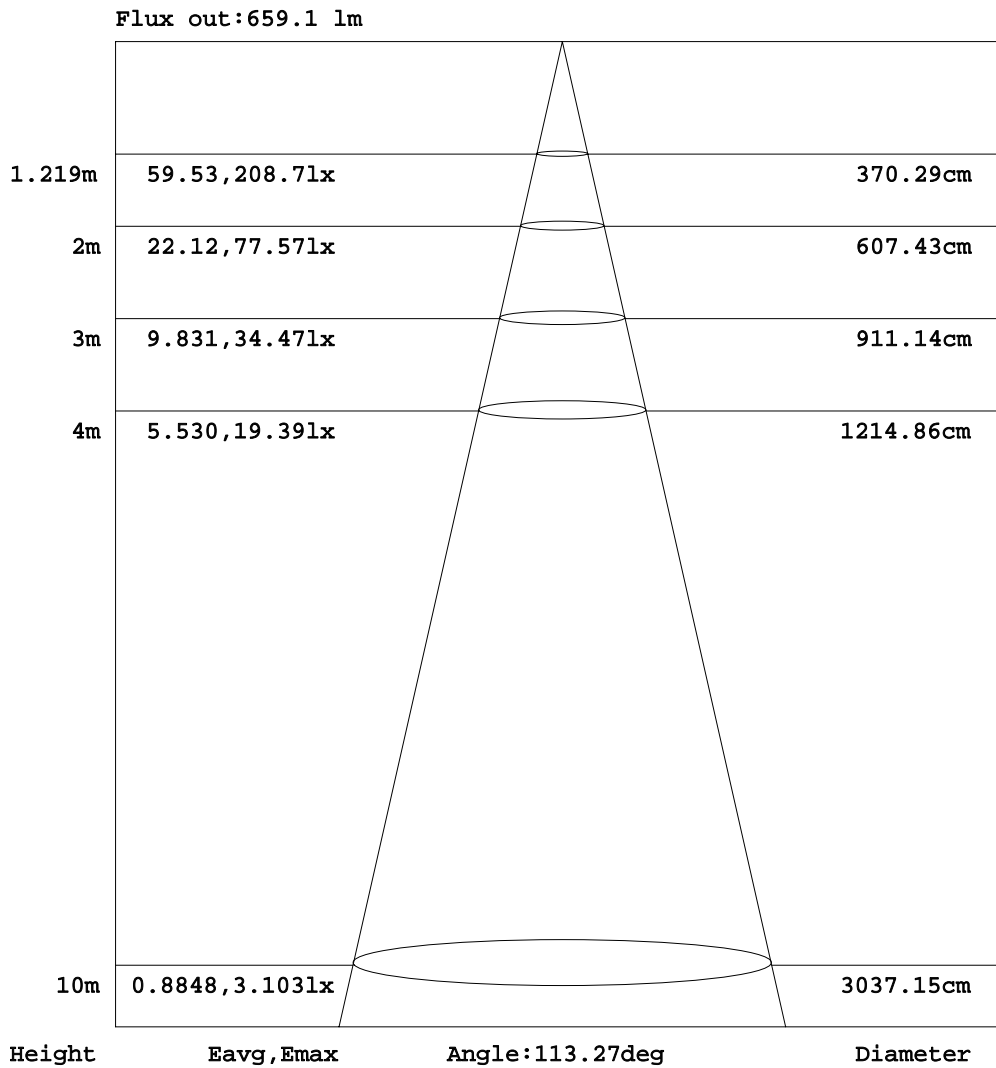


C Range: 0 - 360DEG
C Interval: 5.0DEG
Test Speed: HIGH
Temperature: 25.3DEG
Operators: LIU
Test Date: 2019-05-16

γ Range: 0 - 90DEG
γ Interval: 0.5DEG
Test System: EVERFINE GO-2000B_V1 SYSTEM V2.0.291
Humidity: 65.0%
Test Distance: 8.460m [K=1.0000]
Remarks:

AAI Figure

Test:U:120.1V I:0.1381A P:14.90W PF:0.8988 Lamp Flux:1046.49x1 lm		
NAME: PRX	TYPE:	WEIGHT:
SPEC.:	DIM.:	SERIAL No.:
MFR.:	SUR.:	PROTECTION ANGLE:



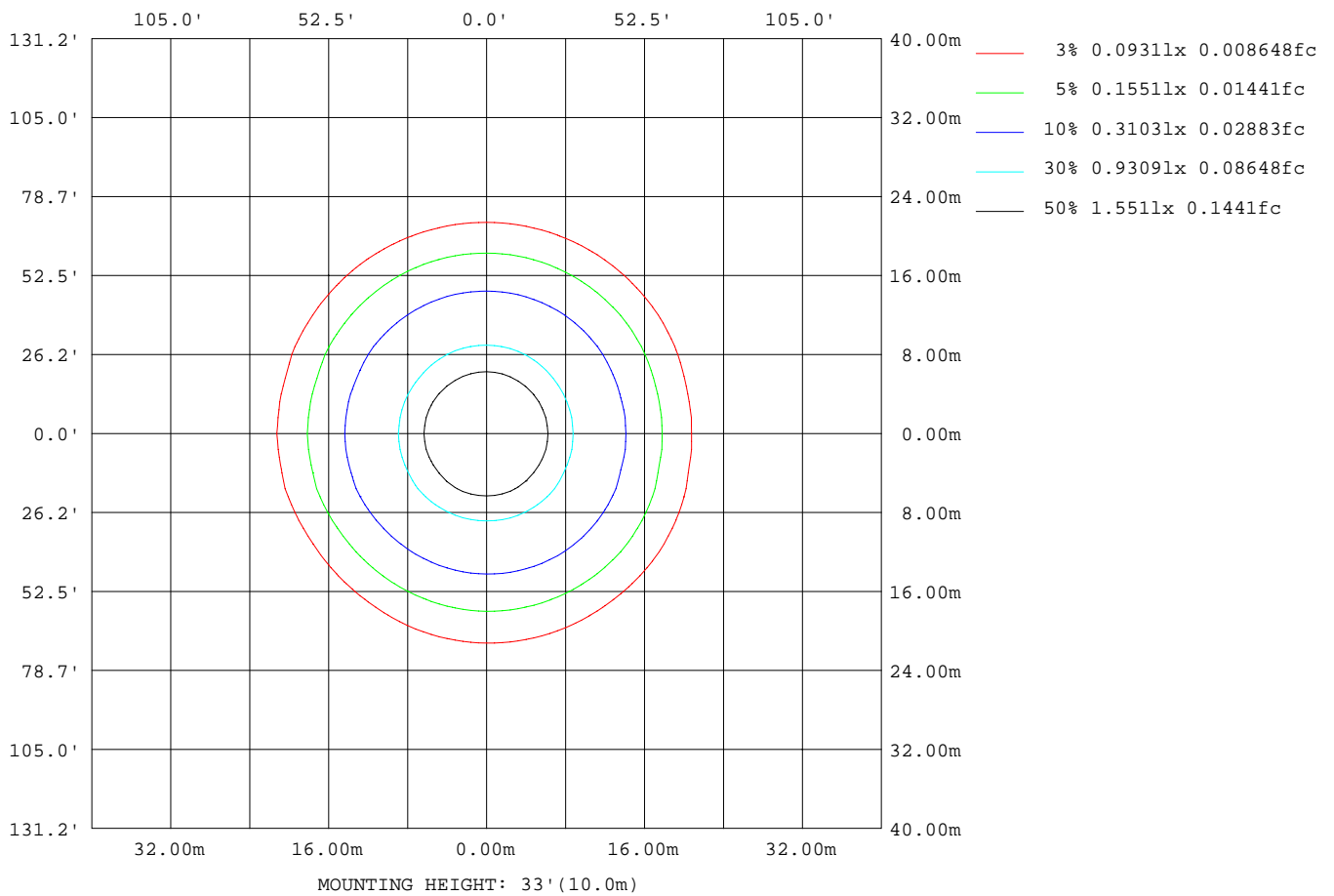
Note: The Curves indicate the illuminated area and the average illumination when the luminaire is at different distance.

C Range: 0 - 360DEG
 C Interval: 5.0DEG
 Test Speed: HIGH
 Temperature: 25.3DEG
 Operators: LIU
 Test Date: 2019-05-16

γ Range: 0 - 90DEG
 γ Interval: 0.5DEG
 Test System: EVERFINE GO-2000B_V1 SYSTEM V2.0.291
 Humidity: 65.0%
 Test Distance: 8.460m [K=1.0000]
 Remarks:

ISOLUX DIAGRAM

Test:U:120.1V I:0.1381A P:14.90W PF:0.8988 Lamp Flux:1046.49x1 lm		
NAME: PRX	TYPE:	WEIGHT:
SPEC.:	DIM.:	SERIAL No.:
MFR.:	SUR.:	PROTECTION ANGLE:



C Range: 0 - 360DEG
 C Interval: 5.0DEG
 Test Speed: HIGH
 Temperature:25.3DEG
 Operators:LIU
 Test Date:2019-05-16

γ Range: 0 - 90DEG
 γ Interval: 0.5DEG
 Test System:EVERFINE GO-2000B_V1 SYSTEM V2.0.291
 Humidity:65.0%
 Test Distance:8.460m [K=1.0000]
 Remarks:

LED Avg.L Report

Test:U:120.1V I:0.1381A P:14.90W PF:0.8988 Lamp Flux:1046.49x1 lm		
NAME: PRX	TYPE:	WEIGHT:
SPEC.:	DIM.:	SERIAL No.:
MFR.:	SUR.:	PROTECTION ANGLE:

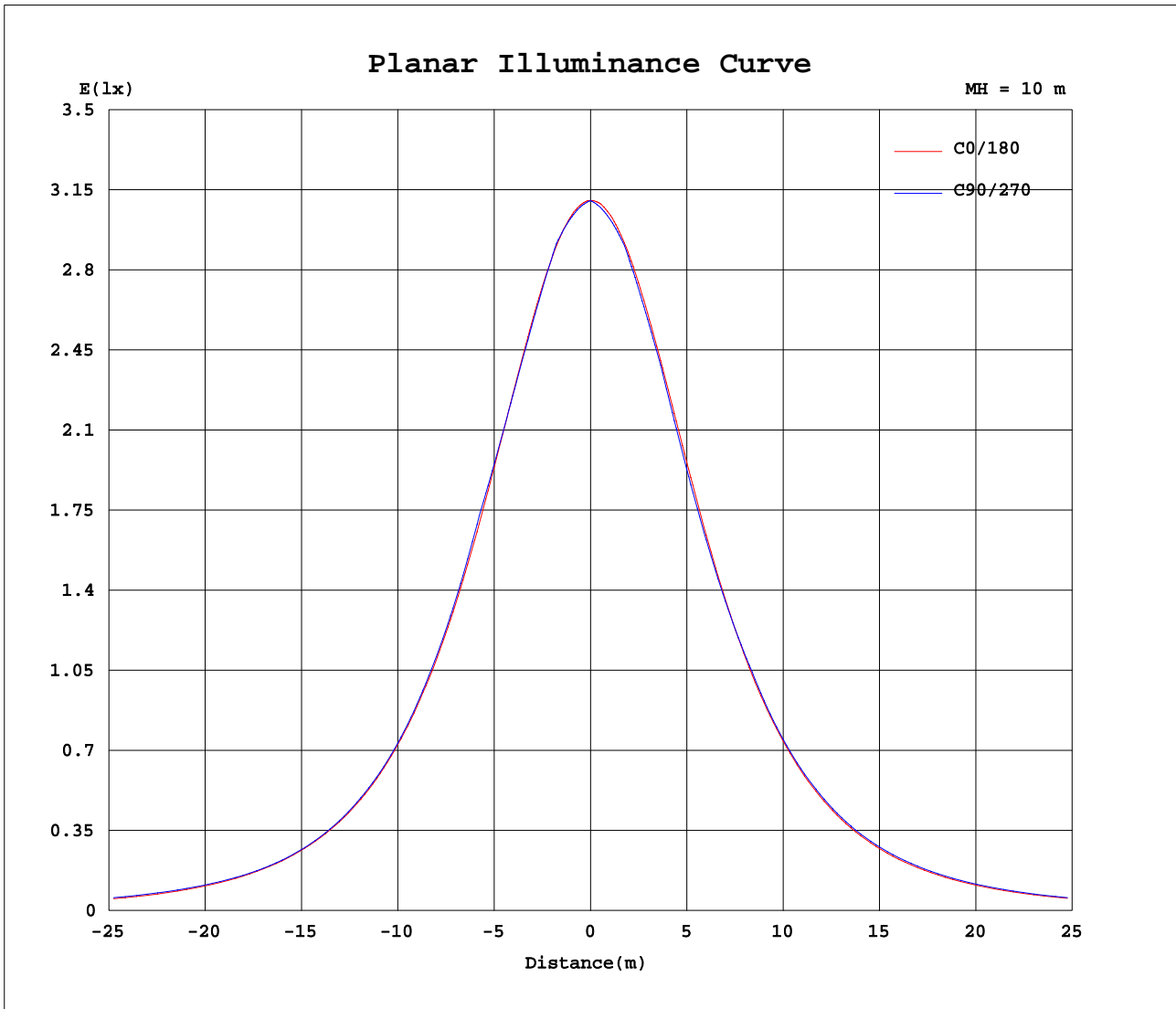
AvgL	cd/m2
L_0~180(65)av	2719
L_0~180(75)av	2607
L_0~180(85)av	3430
L_90~270(65)av	2853
L_90~270(75)av	3287
L_90~270(85)av	0
L_45(65)av	2776
L_45(75)av	2807
L_45(85)av	2436

Standard: GB/T 29293-2012

C Range: 0 - 360DEG
 C Interval: 5.0DEG
 Test Speed: HIGH
 Temperature:25.3DEG
 Operators:LIU
 Test Date:2019-05-16

γ Range: 0 - 90DEG
 γ Interval: 0.5DEG
 Test System:EVERFINE GO-2000B_V1 SYSTEM V2.0.291
 Humidity:65.0%
 Test Distance:8.460m [K=1.0000]
 Remarks:

Planar Illuminance Curve



C Range: 0 - 360DEG
 C Interval: 5.0DEG
 Test Speed: HIGH
 Temperature: 25.3DEG
 Operators: LIU
 Test Date: 2019-05-16

γ Range: 0 - 90DEG
 γ Interval: 0.5DEG
 Test System: EVERFINE GO-2000B_V1 SYSTEM V2.0.291
 Humidity: 65.0%
 Test Distance: 8.460m [K=1.0000]
 Remarks:

LUMINOUS DISTRIBUTION INTENSITY DATA

Test:U:120.1V I:0.1381A P:14.90W PF:0.8988 Lamp Flux:1046.49x1 lm		
NAME: PRX	TYPE:	WEIGHT:
SPEC.:	DIM.:	SERIAL No.:
MFR.:	SUR.:	PROTECTION ANGLE:

Table--1

UNIT: cd

γ (DEG) \ C (DEG)	0	5	10	15	20	25	30	35	40	45	50	55	60	65	70	75	80	85	90
0	310	310	310	310	310	310	310	310	310	310	310	310	310	310	310	310	310	310	310
5	309	308	308	308	308	308	308	308	308	308	308	308	308	308	308	308	308	308	308
10	304	304	304	303	303	303	303	303	304	304	304	304	305	305	305	305	305	305	305
15	297	297	296	296	296	297	297	297	298	297	297	297	296	296	296	296	296	296	296
20	287	287	286	287	287	288	288	287	286	286	286	285	286	286	286	286	286	286	286
25	275	274	274	275	276	276	274	274	273	273	274	274	274	274	275	275	275	276	276
30	260	260	260	261	261	260	259	259	259	260	261	261	262	263	264	264	265	266	266
35	244	243	244	245	243	243	243	243	244	246	247	249	248	248	247	247	247	247	247
40	225	225	226	225	225	224	225	227	229	230	229	229	229	229	229	229	229	228	228
45	205	205	206	205	204	205	207	210	210	209	209	209	209	209	208	208	208	207	207
50	184	184	184	183	184	186	188	188	188	188	188	188	188	188	187	187	187	186	186
55	161	161	161	160	163	165	165	166	166	166	166	166	166	165	165	164	164	163	163
60	137	138	137	138	141	141	142	143	143	144	143	142	142	142	141	141	140	140	139
65	113	114	113	116	117	118	119	120	119	119	119	119	119	120	120	120	120	120	119
70	88.9	89.5	90.5	92.9	94.4	95.7	95.7	95.7	95.7	96.6	97.3	97.9	98.5	98.9	99.3	99.5	99.6	99.5	99.2
75	65.9	66.4	69.3	71.3	72.5	72.6	73.1	73.9	74.8	75.7	76.3	76.7	76.9	77.0	77.0	76.9	76.8	76.6	76.3
80	45.6	46.9	50.2	51.4	51.9	52.5	53.2	53.7	54.0	54.3	54.4	54.5	54.5	54.4	54.3	54.1	53.9	53.6	53.4
85	28.8	32.5	33.6	33.6	33.7	33.8	33.5	26.9	21.7	17.2	13.4	10.2	7.46	5.16	3.29	1.84	0.82	0.20	0.00
90	8.35	0.00	0.00	0.00	0.00	0.00	0.00	0.00	0.00	0.00	0.00	0.00	0.00	0.00	0.00	0.00	0.00	0.00	0.00

C Range: 0 - 360DEG
C Interval: 5.0DEG
Test Speed: HIGH
Temperature: 25.3DEG
Operators: LIU
Test Date: 2019-05-16

γ Range: 0 - 90DEG
γ Interval: 0.5DEG
Test System: EVERFINE GO-2000B_V1 SYSTEM V2.0.291
Humidity: 65.0%
Test Distance: 8.460m [K=1.0000]
Remarks:

LUMINOUS DISTRIBUTION INTENSITY DATA

Test:U:120.1V I:0.1381A P:14.90W PF:0.8988 Lamp Flux:1046.49x1 lm		
NAME: PRX	TYPE:	WEIGHT:
SPEC.:	DIM.:	SERIAL No.:
MFR.:	SUR.:	PROTECTION ANGLE:

Table--2

UNIT: cd

C(DEG) γ (DEG)	95	100	105	110	115	120	125	130	135	140	145	150	155	160	165	170	175	180	185
0	310	310	310	310	310	310	310	310	310	310	310	310	310	310	310	310	310	310	310
5	308	308	308	308	308	308	308	308	308	308	308	308	308	308	309	309	309	309	309
10	305	305	305	305	305	305	305	304	304	304	304	304	304	304	304	305	305	305	305
15	296	296	296	296	296	297	297	297	298	298	298	298	297	297	297	298	298	299	298
20	286	286	286	286	286	286	286	286	287	287	288	289	289	288	288	288	289	290	289
25	276	276	275	275	275	275	275	275	275	275	275	276	277	277	277	276	277	278	277
30	265	265	265	264	263	263	262	261	261	260	260	261	261	262	263	262	263	264	262
35	247	247	247	247	247	248	249	247	246	245	245	244	244	245	247	246	246	247	246
40	228	228	228	228	228	228	228	229	230	229	228	227	226	226	228	228	228	229	228
45	207	206	206	206	206	207	207	207	207	208	210	208	207	207	207	209	208	209	208
50	185	185	184	184	184	184	184	184	185	185	186	188	186	185	185	186	187	188	187
55	162	162	161	161	160	160	160	160	160	161	162	162	164	163	163	163	164	165	164
60	139	138	137	137	136	136	135	135	135	135	136	137	138	140	139	139	140	141	140
65	119	118	117	116	115	113	112	111	110	110	110	110	112	113	116	115	115	117	116
70	98.7	98.1	97.2	96.1	94.9	93.5	92.0	90.2	88.3	86.2	85.5	85.3	85.4	87.0	89.3	90.6	90.7	92.4	91.5
75	75.9	75.5	75.0	74.4	73.8	73.0	72.1	71.2	69.7	67.8	65.7	63.3	62.2	62.2	63.8	66.8	67.7	69.0	68.8
80	53.1	52.8	52.5	52.2	51.9	51.5	51.0	50.6	49.9	49.1	48.2	47.0	45.2	43.0	42.0	43.4	46.8	48.1	47.5
85	0.20	0.80	1.79	3.16	4.91	7.04	9.53	12.5	15.8	19.7	24.3	29.9	29.8	29.2	28.5	26.6	27.3	31.0	30.7
90	0.00	0.00	0.00	0.00	0.00	0.00	0.00	0.00	0.00	0.00	0.00	0.00	0.00	0.00	0.00	0.00	0.00	10.3	0.00

C Range: 0 - 360DEG
 C Interval: 5.0DEG
 Test Speed: HIGH
 Temperature:25.3DEG
 Operators:LIU
 Test Date:2019-05-16

γ Range: 0 - 90DEG
 γ Interval: 0.5DEG
 Test System:EVERFINE GO-2000B_V1 SYSTEM V2.0.291
 Humidity:65.0%
 Test Distance:8.460m [K=1.0000]
 Remarks:

LUMINOUS DISTRIBUTION INTENSITY DATA

Test:U:120.1V I:0.1381A P:14.90W PF:0.8988 Lamp Flux:1046.49x1 lm		
NAME: PRX	TYPE:	WEIGHT:
SPEC.:	DIM.:	SERIAL No.:
MFR.:	SUR.:	PROTECTION ANGLE:

Table--3

UNIT: cd

C(DEG) γ (DEG)	190	195	200	205	210	215	220	225	230	235	240	245	250	255	260	265	270	275	280
0	310	310	310	310	310	310	310	310	310	310	310	310	310	310	310	310	310	310	310
5	309	308	308	308	308	308	308	308	308	308	308	307	307	307	307	307	307	307	307
10	304	304	304	304	304	304	304	304	304	304	304	304	304	304	304	304	304	304	304
15	298	297	297	297	297	297	298	297	297	297	296	296	296	296	296	296	296	296	296
20	288	288	288	288	288	288	287	287	287	287	287	287	287	287	287	287	287	287	287
25	276	276	277	276	276	276	276	276	276	276	275	275	274	274	274	274	274	274	273
30	262	262	263	262	261	262	262	262	261	260	260	260	260	260	260	260	260	260	260
35	246	247	246	246	246	245	245	244	244	244	245	245	245	246	246	246	246	246	245
40	228	228	228	228	227	227	226	227	228	228	229	230	231	231	232	232	232	232	231
45	209	208	208	208	207	207	208	209	211	212	213	212	212	212	212	212	212	212	211
50	187	187	187	186	186	187	189	191	191	191	191	191	191	191	191	191	191	191	191
55	164	165	163	164	165	168	168	168	168	168	169	169	169	169	169	169	169	169	169
60	140	140	140	142	144	144	144	144	145	145	145	146	146	146	146	146	146	146	146
65	117	115	117	119	119	119	120	120	121	121	122	122	122	122	122	122	122	122	122
70	91.4	92.5	94.0	94.1	94.7	95.5	96.2	96.5	96.8	97.0	97.2	97.3	97.5	97.6	97.7	97.8	97.8	97.8	97.8
75	68.5	70.1	70.3	71.1	71.7	72.1	72.4	72.6	75.0	79.2	82.9	86.1	88.8	91.0	92.6	93.5	93.9	93.6	92.7
80	48.4	48.7	49.4	49.6	50.8	55.9	61.0	66.0	70.6	74.9	78.7	82.1	84.9	87.0	88.7	89.6	89.9	89.7	88.7
85	30.8	31.8	36.6	41.6	46.1	38.5	31.9	26.0	20.7	16.1	11.9	8.34	5.38	3.04	1.36	0.34	0.00	0.34	1.36
90	0.00	0.00	0.00	0.00	0.00	0.00	0.00	0.00	0.00	0.00	0.00	0.00	0.00	0.00	0.00	0.00	0.00	0.00	0.00

C Range: 0 - 360DEG
 C Interval: 5.0DEG
 Test Speed: HIGH
 Temperature:25.3DEG
 Operators:LIU
 Test Date:2019-05-16

γ Range: 0 - 90DEG
 γ Interval: 0.5DEG
 Test System:EVERFINE GO-2000B_V1 SYSTEM V2.0.291
 Humidity:65.0%
 Test Distance:8.460m [K=1.0000]
 Remarks:

LUMINOUS DISTRIBUTION INTENSITY DATA

Test:U:120.1V I:0.1381A P:14.90W PF:0.8988 Lamp Flux:1046.49x1 lm		
NAME: PRX	TYPE:	WEIGHT:
SPEC.:	DIM.:	SERIAL No.:
MFR.:	SUR.:	PROTECTION ANGLE:

Table--4

UNIT: cd

C(DEG) γ (DEG)	285	290	295	300	305	310	315	320	325	330	335	340	345	350	355				
0	310	310	310	310	310	310	310	310	310	310	310	310	310	310	310				
5	307	307	307	307	307	307	307	307	307	307	307	308	308	308	308				
10	304	304	304	304	303	303	303	303	303	303	303	303	303	303	304				
15	296	296	296	296	296	296	297	297	296	296	296	296	296	296	296				
20	287	286	286	286	286	286	286	286	286	287	287	286	286	286	286				
25	273	274	274	274	274	274	274	274	274	274	275	275	274	274	274				
30	259	259	259	259	259	259	259	260	259	259	259	260	260	259	259				
35	245	245	244	244	243	243	242	242	243	243	242	243	244	243	243				
40	231	230	229	228	227	226	225	224	224	224	224	224	225	225	224				
45	211	211	211	211	210	208	207	206	205	204	204	205	204	205	205				
50	191	190	190	189	189	189	189	187	185	184	183	183	183	183	183				
55	168	168	168	168	168	167	166	165	165	163	161	160	160	160	161				
60	146	145	145	144	144	144	144	143	142	141	139	138	137	137	137				
65	122	122	121	121	121	120	119	119	119	117	117	115	113	113	114				
70	97.7	97.6	97.4	97.2	96.8	96.4	95.9	95.2	94.5	93.9	93.4	91.9	90.3	88.9	89.0				
75	91.1	89.0	86.3	83.1	79.4	75.2	72.6	72.2	71.6	70.9	70.1	69.6	68.3	66.9	65.9				
80	87.1	84.9	82.1	78.8	74.9	70.5	65.8	60.9	55.9	50.9	49.4	48.7	48.0	47.0	45.7				
85	3.04	5.38	8.34	11.9	16.0	20.7	25.9	31.7	38.2	45.7	41.2	36.3	31.6	30.1	29.4				
90	0.00	0.00	0.00	0.00	0.00	0.00	0.00	0.00	0.00	0.00	0.00	0.00	0.00	0.00	0.00				

C Range: 0 - 360DEG
 C Interval: 5.0DEG
 Test Speed: HIGH
 Temperature:25.3DEG
 Operators:LIU
 Test Date:2019-05-16

γ Range: 0 - 90DEG
 γ Interval: 0.5DEG
 Test System:EVERFINE GO-2000B_V1 SYSTEM V2.0.291
 Humidity:65.0%
 Test Distance:8.460m [K=1.0000]
 Remarks: