

NeoVision24 SideFlex

24VDC 3W LED Tape Specification Sheet

GM Lighting®

Project Name	Type
--------------	------

Catalog #	Date
-----------	------

PRODUCT OVERVIEW

A 24VDC high transmission, flexible linear 'neon' tape that is field cuttable and joinable. Designed for applications that require ultra-rich light and color saturation that is characteristic of neon. SideFlex enables horizontal bending that conforms tape around curvilinear surfaces.



FEATURES

- 24VDC operation
- Wet location - IP65
- Multiple power feed options
- Tape encased in UV stable silicone (UV protected)
- Dimmable
- Wireless control with LUXcontrol App and controller
- 2700K, 3000K, 4000K / Amber, Blue, Green or Red
- 120° viewing angle
- Maximum run: 32'-8"
- Field cuttable and joinable in 2 inch increments while retaining IP65
- Each run requires an end cap (sold separately)
- No tools required for capping and joining
- Mounting clips included (recommend use 1 per foot)

SPECIFICATIONS

ELECTRICAL

- 24VDC
- 3W watts per foot

PHOTOMETRIC

- 90+ CRI

WARRANTY

- 5-year warranty when paired with GM power supply

CERTIFICATION

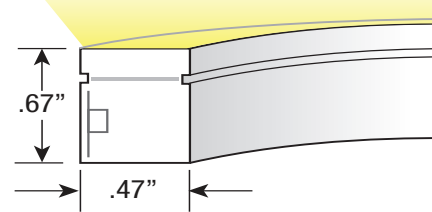
- 24VDC UL compliant
- IP65

ACCESSORIES

- LineDRIVE 24V Power Supplies
- Aluminum Channels (below)
- Connectors (below)
- Tape Cutting Tool (below)



SIDEFLEX CUTAWAY DIAGRAM
(Horizontal Bend)



ORDERING INFORMATION

Example: NV24S-3W-30K-16

Model	Watts / Foot	Color Temp.	Reel Length
NV24S	3W	27000K (27K)	
		3000K (30K)	16 (16'-4")
		4000K (40K)	32 (32'-8")
		Amber (AM)	
		Blue (BL)	
		Green (GR)	
		Red (RD)	

CONTROLLERS



Model	Description
SHWC	Smart 2.4 GHz WiFi Controller, Standard 12V/24V Low Voltage, 1-Channel / 2-Wire
SHWC-RGBW-RPT	Universal Smart Power Repeater

Every reel includes (1) NV24S-PF-EF (tape to power feed with 48" of lead). 16' reel includes (16) NV24S-MC-A mounting clips and screws. 32' reel comes with (32) NV24S-MC-A mounting clips and screws. Operating temp.: -4° - 130°F.

CONNECTORS

Catalog No.	Description
NV24S-PF-EF8	Tape to power flexible end feed - 8 ft. length
NV24S-PF-BF8	Tape to power flexible bottom feed - 8 ft. length
NV24S-SP	Tape to tape splice connector
NV24S-CHL-A4	Aluminum channel - 4 ft. length
NV24S-CHL-A8	Aluminum channel - 8 ft. length
NV24S-MC-A	Aluminum mounting clips (set of 20)

Catalog No.	Description
NV24S-TTC6	Tape to tape 6" flexible connector
NV24S-TTC12	Tape to tape 12" flexible connector
NV24S-TTC24	Tape to tape 24" flexible connector
NV24S-FLEX-CHL	Flexible mounting channel - 39.5"
NV24-CT	Tape cutting tool
NV24S-EC	End cap

The above connectors, channels, mounting clips and caps are for the exclusive use of NeoVision24 SideFlex Neon Tape and are ordered separately. See website for accessory images.

©2020 GM LIGHTING, LLC • www.gmlighting.net • Specifications subject to change without notice
18700 Ridgeland Ave., Tinley Park, IL 60477 • Toll-Free: (866) 671-0811 FAX: (708) 478-2640 • tech@gmlighting.net

NVS-3W_071224

NeoVision24 SideFlex

24VDC 3W LED Tape Specification Sheet

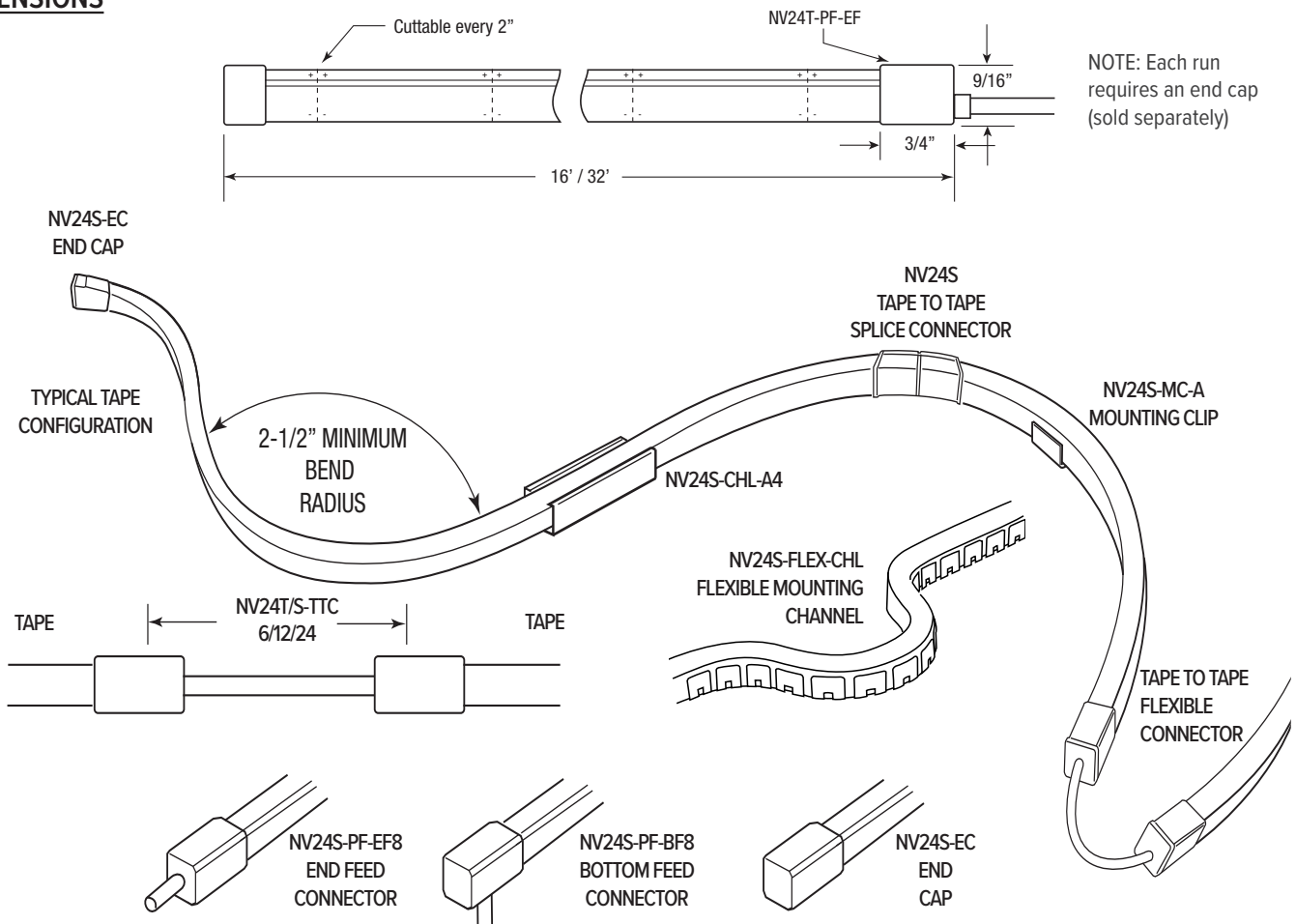


Catalog No.	Length	Lumens per Foot	CRI	Color Temp.	Max. Run
NV24S-3W-27K-16	16'-4"	215	90+	2700K	32'-8"
NV24S-3W-27K-32	32'-8"	215	90+	2700K	32'-8"
NV24S-3W-30K-16	16'-4"	230	90+	3000K	32'-8"
NV24S-3W-30K-32	32'-8"	230	90+	3000K	32'-8"
NV24S-3W-40K-16	16'-4"	215	90+	4000K	32'-8"
NV24S-3W-40K-32	32'-8"	215	90+	4000K	32'-8"
NV24S-3W-AM-16	16'-4"	N/A	90+	AMBER	32'-8"
NV24S-3W-AM-32	32'-8"	N/A	90+	AMBER	32'-8"
NV24S-3W-BL-16	16'-4"	N/A	90+	BLUE	32'-8"
NV24S-3W-BL-32	32'-8"	N/A	90+	BLUE	32'-8"
NV24S-3W-GR-16	16'-4"	N/A	90+	GREEN	32'-8"
NV24S-3W-GR-32	32'-8"	N/A	90+	GREEN	32'-8"
NV24S-3W-RD-16	16'-4"	N/A	90+	RED	32'-8"
NV24S-3W-RD-32	32'-8"	N/A	90+	RED	32'-8"

Kelvin temperature (color) ±100K.

Every reel includes (1) NV24S-PF-EF (tape to power feed with 48" of lead.). 16' reel includes (16) NV24S-MC-A mounting clips and screws. 32' reel comes with (32) NV24S-MC-A mounting clips and screws. Operating temp.: -4° - 130°F.

DIMENSIONS

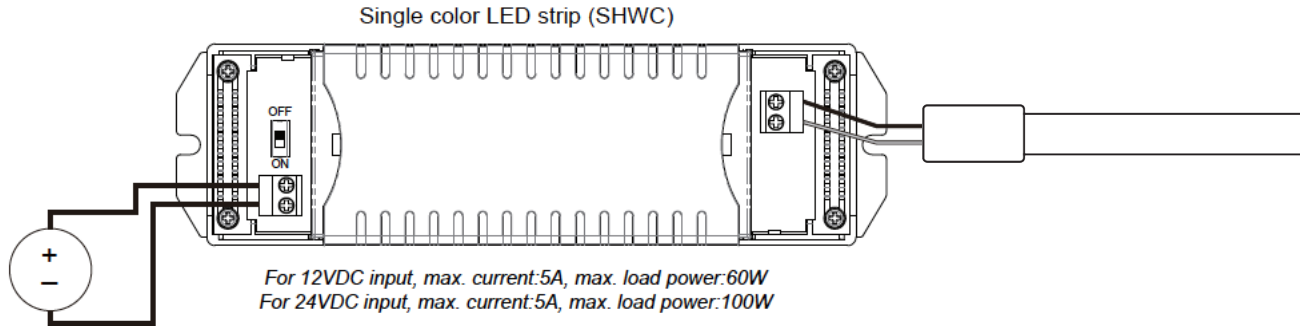


NeoVision24 SideFlex

24VDC 3W LED Tape Specification Sheet

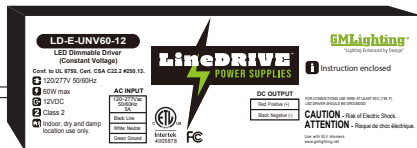
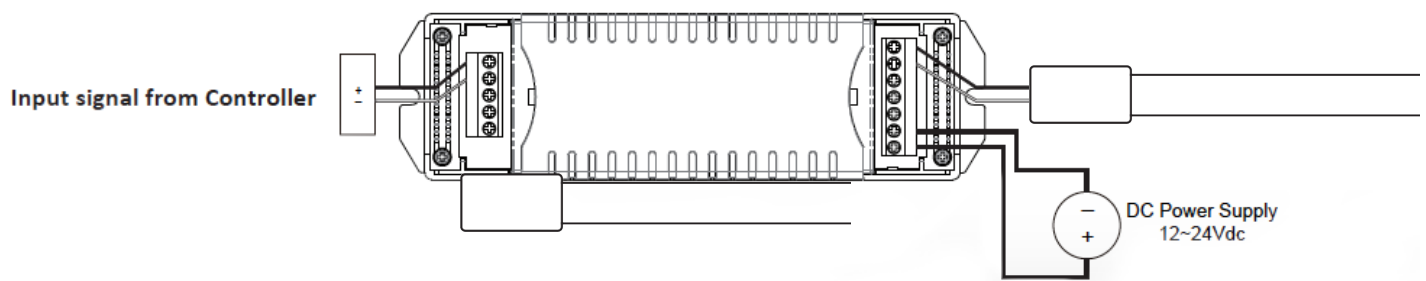


WIRING DIAGRAM



SHWC and Repeater Wiring

Single color connection (1 channel)

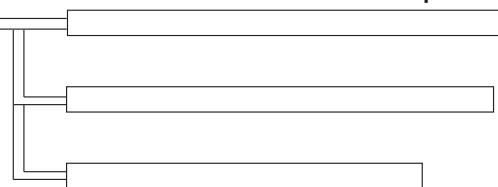


LineDRIVE™ Power Supply



LUXcontrol™ Controller

NeoVision24™ LED Tape



Expandable with universal power repeater (SHWC-RGBW-RPT) for larger projects



Remote WiFi Control

LUXcontrol™ App



Router Signal

Note: For use with LD-E (non-dimmable) or LD-ED (dimmable) power supply only. Not compatible with LD-MD (magnetic) power supply.



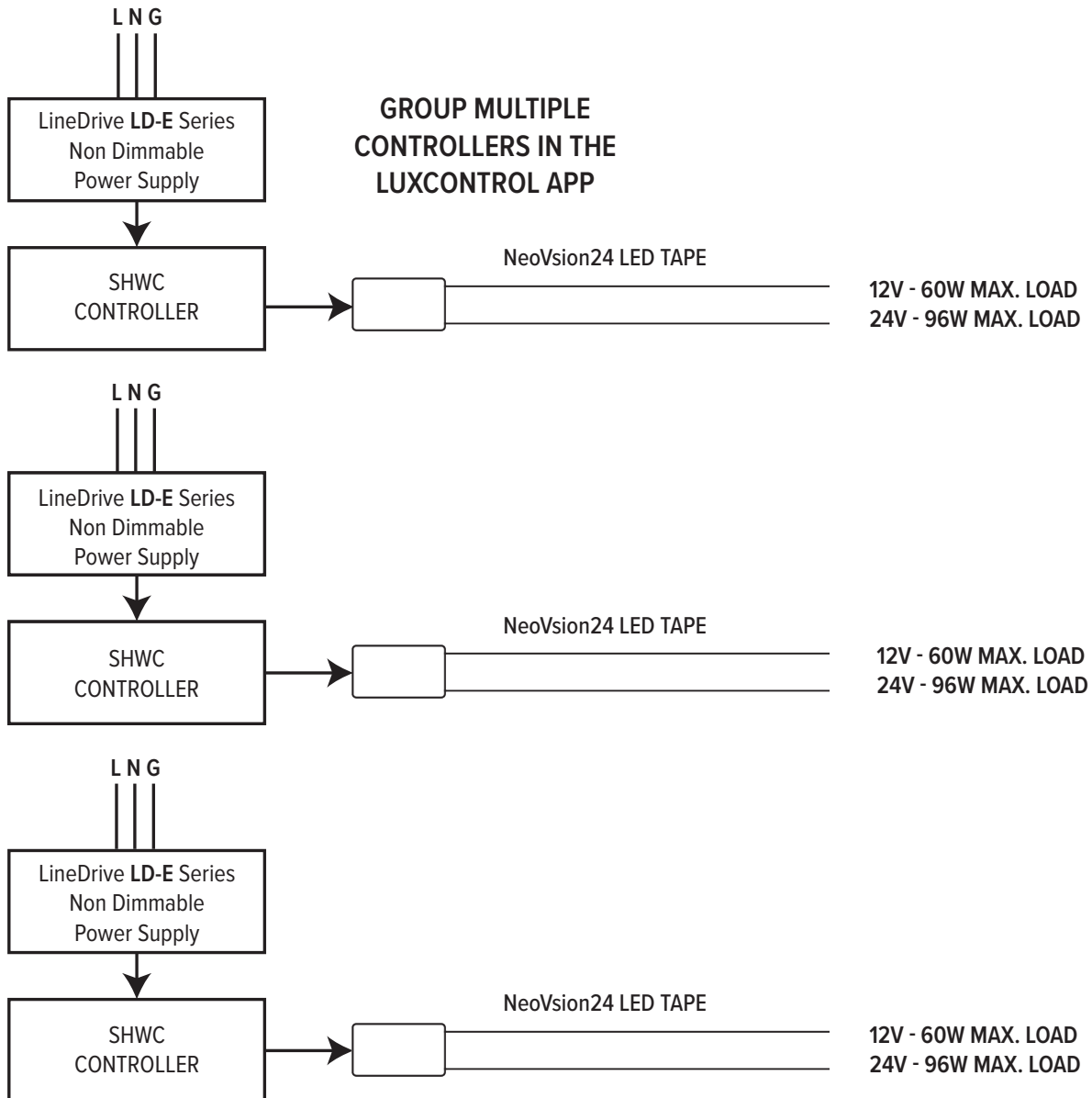
NeoVision24 SideFlex

24VDC 3W

LED Tape Specification Sheet



SHWC LUXCONTROL WIFI CONTROLLER



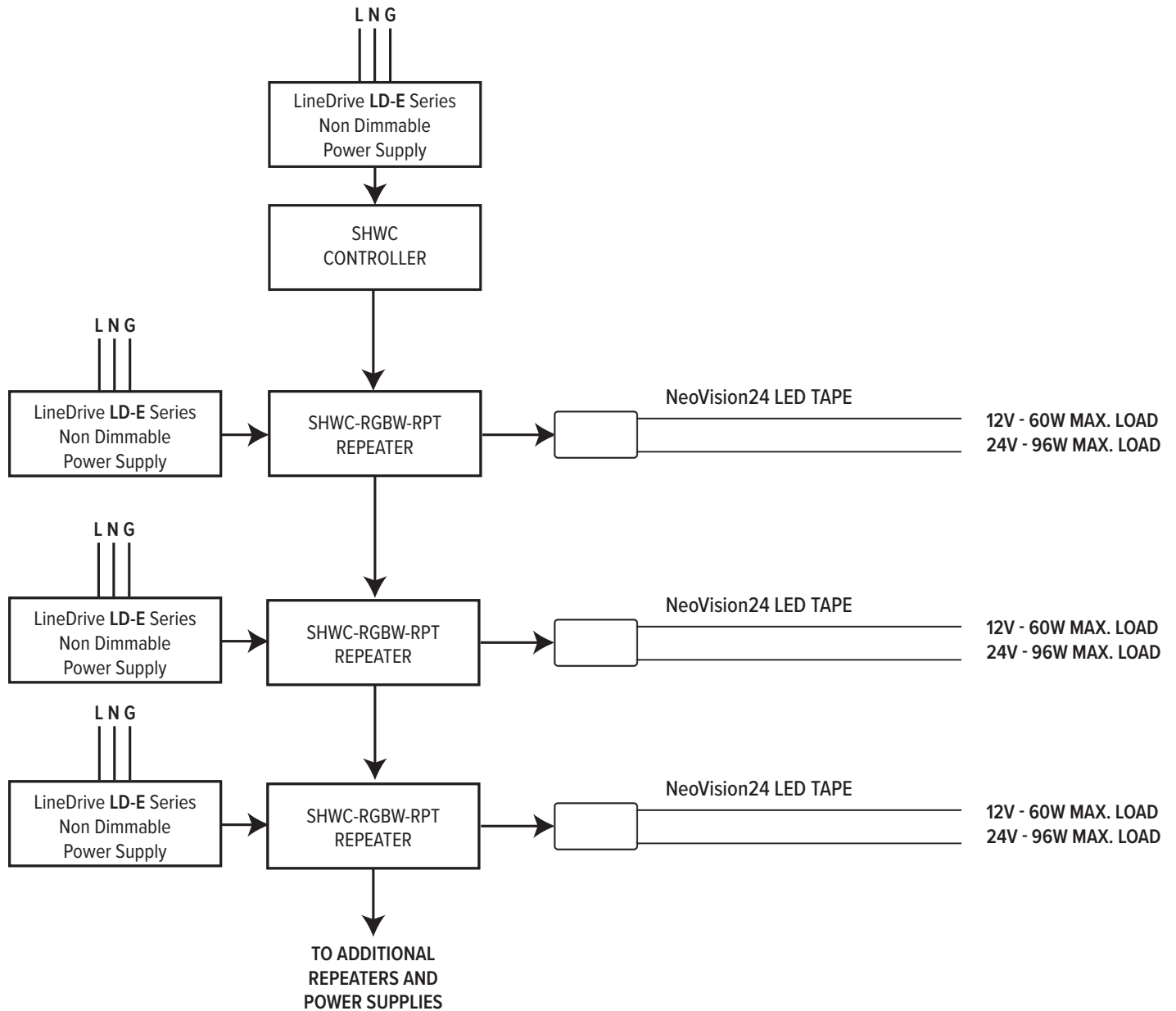
NeoVision24 SideFlex

24VDC 3W

LED Tape Specification Sheet



SHWC LUXCONTROL WIFI CONTROLLER WITH POWER REPEATER

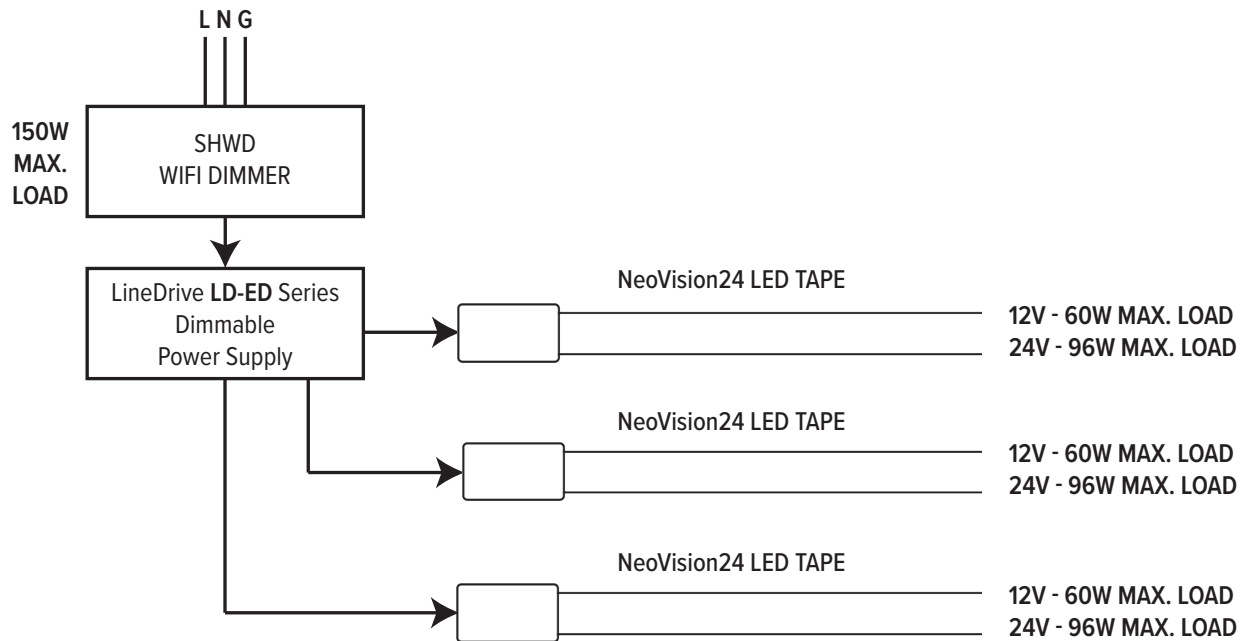


NeoVision24 SideFlex

24VDC 3W LED Tape Specification Sheet



SHWD LUXCONTROL WIFI DIMMER



SWITCHLD SWD DRIVER AND DIMMER

